



3450 Sabin Brown Road • Wickenburg, AZ 85390  
(800) 992-3833 • mail@bnproducts.com

## BNCE-30 The Cutting Edge Saw™

### PARTS LIST



A new design in a multipurpose cutting tool that can be used on all kinds of material found on the job. It can easily cut rebar, all-thread rod, locks, chain, EMT conduit, copper pipe, steel rods, steel tubing, and much more. This hand-held tool is lightweight and powered by 1100W double insulated motor that only pulls 9 amps using standard 120V/60Hz. It features a three position handle and has a no load speed of 2000 rpm. The capacity of the opening is 1.18" (30mm). This tool is ETL Listed and is excellent for cutting material flush with concrete or block. Comes complete with two TCT blades a chip collector bag and case.

#### Specifications for the BNCE-30 Cutting Edge Saw™

Model No.	BNCE-30
Power Supply	120 Volt -60 Hz, 9 Amp, Single phase
Motor Type	1100 Watt Double Insulated
No-Load Blade Speed	2,000 RPM
Max Cutting Capacity	1" (25mm)
Max Blade Diameter	127 mm (5")

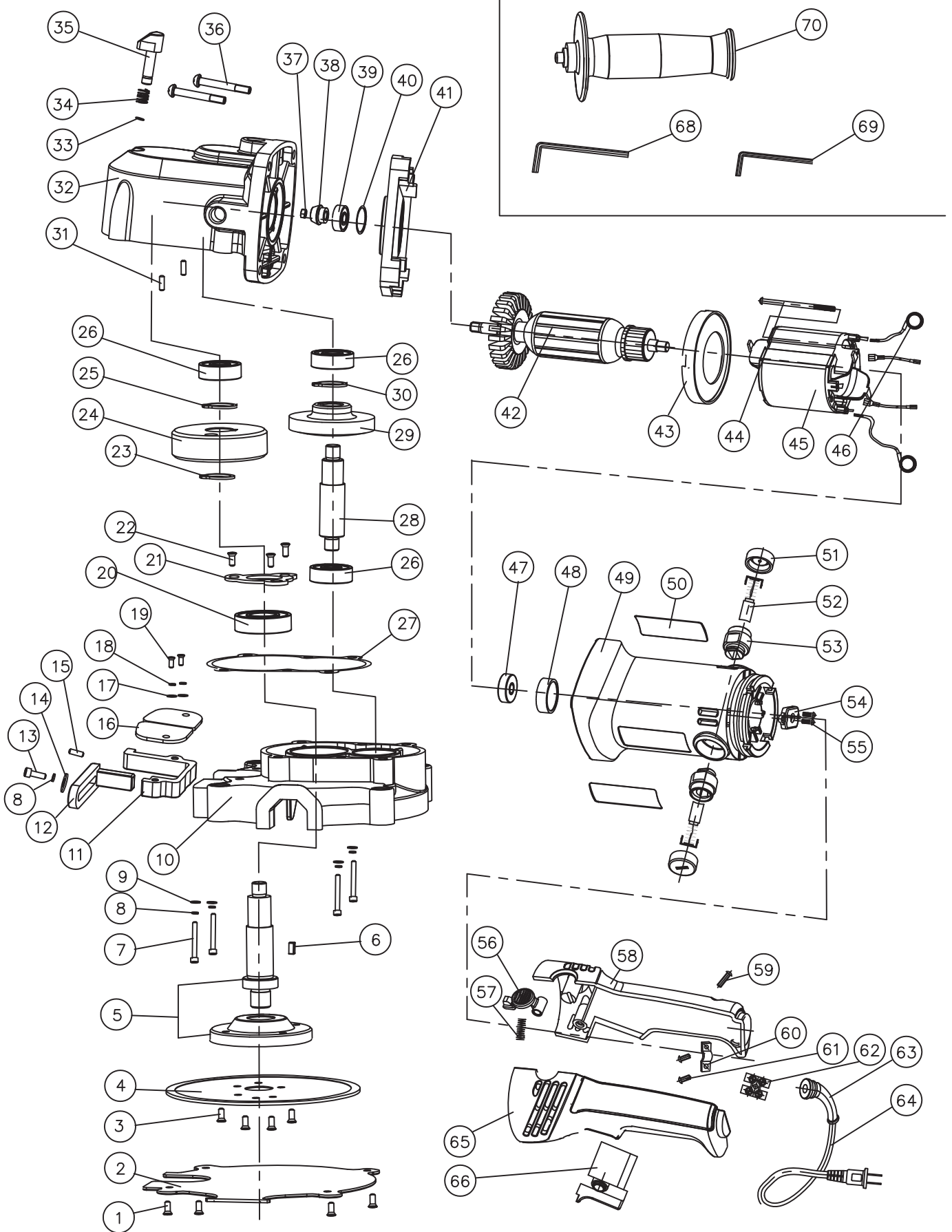


Voted Most Innovative  
Tool at World of Concrete



BNCE-30

# The Cutting Edge Saw™



**BN PRODUCTS-USA, LLC.**

A Division of Benner-Nawman, Inc.

BNCE-30

**The Cutting Edge Saw™**

Customer Service • (800) 992-3833 • mail@bnproducts.com

ITEM	PART NO.	DESCRIPTION
1	BNCEP1-71	HEXAGON SOCKET SCREW (M5X14)
2	BNCEP30-02	BOTTOM PLATE GUARD (BNCE-30)
3	BNCEP1-73	HEXAGON SOCKET SCREW (M5X8)
4	RB-BNCE-30	Blade BNCE-30
5	BNCEP30-06	BLADE SPINDLE ASSY. (BNCE-30)
7	BNCEP-07	HEX BOLT (M5X30)
8	BNCEP-08	SPRING WASHER
9	BNCEP-09	PLAIN WASHER (5 mm)
10	BNCEP30-10	ALUMINUM HOUSING (BNCE-30)
11	BNCEP30-17	FIXED CUTTING GUIDE BLOCK (30)
12	BNCEP30-18	MOVEABLE CUTTING GUIDE BLOCK
13	BNCEP-20	HEX BOLT (M5X15)
14	BNCEP-66	PLATE WASHER (5mm)
15	BNCEP-19	PIN (A5X10)
16	BNCEP30-16	LEFT/ RIGHT RUBBER PLATE (30)
17	BNCEP-22	PLAIN WASHER (4mm)
18	BNCEP-23	RETAINER WASHER (4mm)
19	BNCEP-24	CAP BOLT (M4X20)
20	BNCEP-25	BALL BEARING (6002-2RS)
21	BNCEP30-21	BEARING PLATE (BNCE-30)
22	BNCEP30-22	CROSS REC COUNT SCREW M4X10
23	BNCEP1-78	KEY FOR BLADE SPINDLE
24	BNCEP-26	SPACER
25	BNCEP30-25	BIG GEAR (BNCE-30)
26	BNCEP-28	RETAINING RING
27	BNCEP-13	BALL BEARING (628-Z)
28	BNCEP-12	GASKET SEAL
29	BNCEP-14	** USE BNCEP-16 **
30	BNCEP-16	BEVEL GEAR ASSY W/ SHAFT
31	BNCEP30-31	SPACER (BNCE-30)
32	BNCEP-29	PIN (A5X16)
33	BNCEP-30	ALUMINUM GEAR BOX HOUSING
34	BNCEP-31	STEEL RING (6mm)
35	BNCEP-32	SPRING FOR LOCK BUTTON
36	BNCEP-33	BLADE LOCKING BUTTONS

37	BNCEP-34	PAN HEAD TAPPING SCREW 4.2X32
38	BNCEP-35	HEX NUT (M6)
39	BNCEP-36-A	BEVEL PINION (NEW STYLE)
40	BNCEP-37	ARMATURE BEARING
41	BNCEP-38	O-RING (25X2)
42	BNCEP-39	CENTER HOUSING
43	BNCEP-40	BNCEP-40A BNCEP-35,BNCEP-36-A
44	BNCEP-43	FAN GUIDE
45	BNCEP-44	PAN HEAD TAPPING SCREW
46	BNCEP-45	STATOR COIL
47	BNCEP-46	ELECTRICAL CONNECTOR
48	BNCEP-41	BALL BEARING (607-2RS)
49	BNCEP-42	BEARING BUSHING
49	BNCEP-54	ROTATION BUTTON FOR HANDLE
50	BNCEP-47	ELECTRICAL HOUSING
51	BNCEP30-51	NAME PLATES
52	BNCEP-51	CARBON BRUSH CAP (BNCE-20)
53	BNCEP-50	CARBON BRUSH SET (BNCE-20)
54	BNCEP-49	BRUSH HOLDER
55	BNCEP-52	PLATE FOR INNER WIRE
56	BNCEP-53	PAN HEAD TAPPING SCREW
58	BNCEP-55	SPRING FOR ROTATION BUTTON
59	BNCEP-59	RIGHT HANDLE
60	BNCEP-60	PAN HEAD TAPPING SCREW
61	BNCEP-58	CORD RETAINING CLAMP
62	BNCEP-57	PAN HEAD TAPPING SCREW
63	BNCEP-63	TERMINAL
64	BNCEP-62	CORD ARMOR
65	BNCEP-61	POWER CORD - 120V 60HZ
66	BNCEP-64	LEFT HANDLE
67	BNCEP-56	TRIGGER SWITCH, 110V
68	BNCEP30-68	SEE BNCEP-A3
69	BNCEP30-69	SEE BNCEP-A4
70	BNCEP-67	3 - POSITION SIDE HANDLE

# MORE TOOLS FROM WWW.BNPRODUCTS.COM

## BNCE-20-24V CORDLESS CUTTING EDGE SAW™



**Complete With Two (2) 24V  
Batteries and an AC Charger**

- A multipurpose cutting tool that can easily handle #6 (3/4") rebar.
- The capacity opening is .875" and can cleanly cut all-thread, chain, pipe, conduit... and more
- The tool comes with an extra blade, a three-position side handle, all in a storage case. Excellent for cutting rebar and bolts near flush with concrete construction surface.



Product No.	Description
BNCE-20-24V	Cutting Edge Saw™

## BNCE-20 CUTTING EDGE SAW™



**Easily Cuts 3/4" #6 Rebar  
and 7/8" All-thread Rod**

- 3-position removable side handle and a rotating trigger handle
- Double insulated power harness
- ETL Certified and Listed

Includes: extra cutting blade, extra carbon brushes, removable side handle, chip collector attachment, tool kit, and a nifty plastic molded carrying case. Voted most innovative tool at the World of Concrete



Product No.	Description
BNCE-20	Cutting Edge Saw™

## BNCE-30-24V CORDLESS CUTTING EDGE SAW™



**Complete With Two (2) 24V  
Batteries and an AC Charger**

- A mid-size multipurpose cutting tool that can easily handle #8 (1") rebar.
- The capacity opening is 1.125" and can cleanly cut all-thread, chain, pipe, conduit and much more. . .
- Includes an extra 5" blade and a three-position side handle, all in a nifty case. Excellent for cutting rebar and bolts near flush with concrete construction surface.



Product No.	Description
BNCE-30-24V	Cutting Edge Saw™

## DC-20WH PORTABLE #6 HYDRAULIC REBAR CUTTER



**Largest selling in-field  
rebar cutter in the USA**

- Maximum cutting diameter is 3/4" #6 (20mm) grade-60 rebar.
- Cutting speed is less than 3 seconds with a maximum cutting pressure of 15 tons.
- This is an electric/hydraulic cutting shear that draws 10 amps.
- The tool also includes a safety relief valve and a cutting guard as standard features.



Product No.	Description
DC-20WH	Portable Rebar Cutter