



**BN PRODUCTS-USA, LLC.**

3450 Sabin Brown Road • Wickenburg, Arizona 85390

(800) 992-3833 • (928) 684-2813 • [www.bnproducts.com](http://www.bnproducts.com)

## **Product Manual**

### **BNR6402K Material Mixer**



**Professional Material Mixers**  
**from BN Products, U.S.A.**

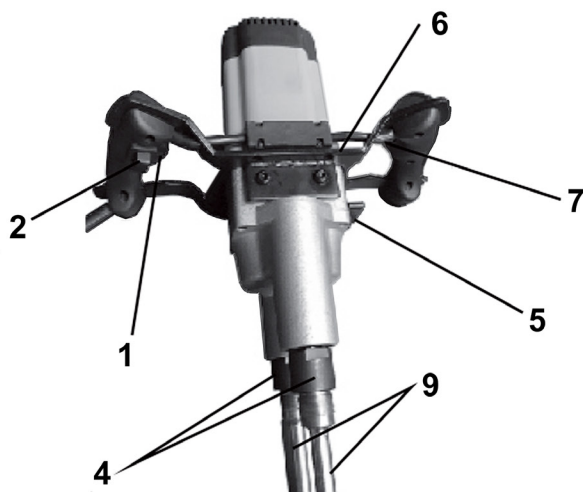


# BN PRODUCTS-USA, LLC.

3450 Sabin Brown Road • Wickenburg, Arizona 85390

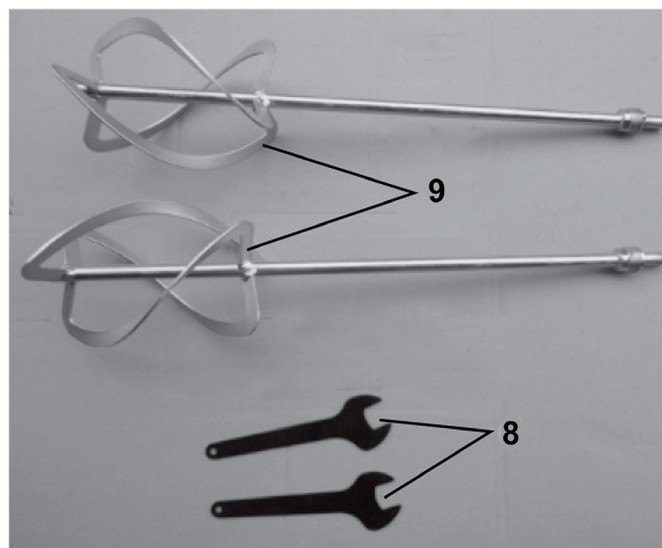
(800) 992-3833 • (928) 684-2813 • [www.bnproducts.com](http://www.bnproducts.com)

## BNR6402K Technical Manual



### Machine Components

- 1 ON/OFF switch
- 2 Release button for ON/OFF switch
- 4 Paddle coupling
- 5 Two speed dial button
- 6 Steel handle
- 7 Speed control knob
- 8 Wrench
- 9 Mixing paddles



### Tech Notes

Rated power/Current consumption:	1800W
Power supply:	120V-
Frequency:	60 Hz
First gear:	0-300min
Second gear:	0-600min
Weight w/o mixing tool:	6.5kg
Protection class:	II Double Insulated





# BN PRODUCTS-USA, LLC.

3450 Sabin Brown Road • Wickenburg, Arizona 85390

(800) 992-3833 • (928) 684-2813 • [www.bnproducts.com](http://www.bnproducts.com)

## Safety Instructions

**WARNING:** Please read all notes and instructions on safety. Failure to observe any of the notes and instructions on safety could result in an electric shock, fire and/or serious injury.

Make sure that you keep all notes and instructions on safety for future reference. To be able to use the machine safely it is essential that you read the operating instructions and the safety instructions thoroughly and comply with all of them. The machine is to be used only by persons who have read the operating instructions and who are acquainted with the occupational safety and accident prevention regulations in force in your immediate area.

In addition, you must also comply with the general safety instructions also included with the machine. Take care to ensure that the main power supply corresponds to the specifications on the rating plate.

Do not use the device in any environments with potentially explosive atmospheres. Do not mix any readily flammable solvents or solvent-containing substances with a flash point of below 21° C.

Take care to ensure that no liquid splashes against the motor housing and keep it away from rain to prevent risk of an electric shock! Never clean the machine with water – again, risk of electric shock!

Do not wind cables or leads around any parts of your body.

Always hold the machine firmly with both hands when carrying out your work and make sure you have a secure footing. Do not use the machine with a damaged power cord.

If the power cord is damaged, do not touch the cable and pull out the power cord immediately. There is an increased risk of electric shock from a damaged cord. If the power cord has to be replaced (because of damage), ensure that it is replaced by the manufacturer or an authorized representative of the manufacturer (electrician) in order to avoid any risk to safety.

Hold the machine by the insulated grip surfaces when operating to prevent possible shock if contacted is made with concealed power cables or the machine's own main power cable.

Contact with a live cable may make metal components of the machine live as well and could cause an electric shock. Before starting up, check that the mixing paddle is securely attached and rotates without a hitch. Start up and run this machine in a mixing container only. Ensure that the mixing container is sturdy and in a firm and secure position.

Do not reach into the mixing container with your hands or insert any other objects into it while mixing is in process. Let the machine do its job! Wait until the machine comes to a complete stop before taking it out of the mixture. Rotating tools can snag and cause injuries or damage.

If the sound level exceeds 85 dB(A) where you are working, please use ear protection! We recommend that you wear work gloves and protective goggles when using the mixer. Standard regulations require that you wear close fitting clothing.

To protect yourself from harmful dust while mixing, wear a dust mask. Some materials are deemed to be carcinogenic. Use a dust extractor wherever possible.

- Read and observe the operating instructions for the machine before you start it up!
- Always wear protective goggles and ear protection while working.
- It is advisable to wear a dust mask whenever working with materials which generate large amounts of dust.
- Always wear protective gloves while working.
- Wear safety shoes with steel caps during operation.

## Proper use

The machine is designed for mixing liquid, granular and powder-based building products such as paints, mortar, concrete, adhesives, plaster, mixes containing silica sand, thermosetting resin and similar substances. Use the right mixing paddle for the consistency of the material and the quantity to be mixed.



# BN PRODUCTS-USA, LLC.

3450 Sabin Brown Road • Wickenburg, Arizona 85390  
(800) 992-3833 • (928) 684-2813 • [www.bnproducts.com](http://www.bnproducts.com)

Please refer to the information in the technical data when choosing the size of paddle (diameter/mixing action). If the wrong mixing action or mixing tool diameter is selected, this may cause the machine/gear unit to become overloaded and lead to damage as a result.

This electrical tool is not designed for use in continuous operation. Given the high torque levels generated by the machine, it must not be used as a power drill. The machine must not be used for the preparation of food related materials.

## Operation

- Check to see that the power supply shown on the rating plate is the same as the main power supply.
- Always hold the machine with both hands.
- Press the starting lock-out button 1.
- Press the ON/OFF switch 2.
- The ON/OFF switch can be locked!
- Always work with the ON/OFF switch fully pressed.
- To stop working, simply release the ON/OFF switch.

Always reduce the rotating speed when submerging the mixing tool into the mixing material or lifting it out. Once the mixing tool is fully submerged, increase the speed again to ensure that the motor is adequately cooled.

Keep the immediate area around the mixing container clear of other objects.

Continue mixing until all of the mixing material is completely incorporated. Please follow the processing instructions of the manufacturer of the material.

The greater the viscosity of the material, the greater the impact of the torque forces on the machine, so you should be prepared for this when you carry out your work.

If the mixing tool comes into contact with a surface (e.g. the bottom of the tub) while running, it may kick back.

Set the machine down resting on the guard handle after you have finished your mixing work.

Always pull the power plug out of the socket outlet before carrying out any work on the machine.

## Fitting the paddles

Insert the paddle into the proper coupling and screw it in hand tight. The left paddle will only fit into the left side coupling and the right will only fit into the right coupling. Make sure that the markings on the mixing attachments match those of the respective mixing shaft when you fit them. For trouble-free operation the markings must match up. In addition, the paddles can only be fitted in certain positions. This is to ensure that they do not come into contact with each other.

To release or change the mixing paddles, simply unscrew them from the coupling and this releases the mixing paddles.

## Care and Maintenance

Before you carry out any operations on the machine, and especially when changing the mixing paddles, always pull the power plug out first.

Clean the machine and the mixing paddles immediately after use. Keep the couplings clean and freely moving at all times.

Keep the ventilation slits clean and clear at all times so that the machine can be properly cooled. Blocked ventilation slits will lead to damage to the machine.

Make sure that the ON/OFF switch moves and releases smoothly at all times. The machine is equipped with self-deactivating carbon brushes. This means that the machine will shut itself down once a certain level of wear is reached.







## **BN PRODUCTS-USA, LLC.**

3450 Sabin Brown Road • Wickenburg, Arizona 85390

(800) 992-3833 • (928) 684-2813 • [www.bnproducts.com](http://www.bnproducts.com)

### ***Professional Material Mixers From BN Products-USA***



**BNR6169 - 1050W Hand-Held Paddle Mixer** has a forward and reverse switch with a variable speed trigger and a lock-on button for continuous operation. Comes complete with a standard M14 paddle connection or 1/2" shank capacity for any mixing paddles. The D-handle rotates 360° with a 3-position removable side handle.



**BNR6400 - 1800W Hand-Held Paddle Mixer** has an ergonomically designed handle with a soft grip feature. This 2-speed power mixer has a soft start feature, variable speed and a constant speed control setting. The safety on/off switch also has a lock-on button for continuous operation. The tool has a heavy-duty gearbox with a powerful high torque motor.



**BNR6402A 1800 watt Hand-Held Paddle Mixer** is a powerful 2-speed mixer with double shaft. This high-performance tool has 2 paddles working clockwise and counter clockwise respectively. It has robust gearbox with a powerful high torque motor and an ergonomically designed handle with a soft grip feature. This mixer has a soft start function and constant speed control.



**BNR7000 - 1400W TwinMaster Paddle Mixer** has an ergonomically designed handle with a soft grip feature. This mixer features a unique paddle design that mixes in two directions at the same time with a variable speed control setting. The safety on/off switch also has a lock-on button for continuous operation. The tool has a heavy-duty gearbox with a powerful high torque motor.



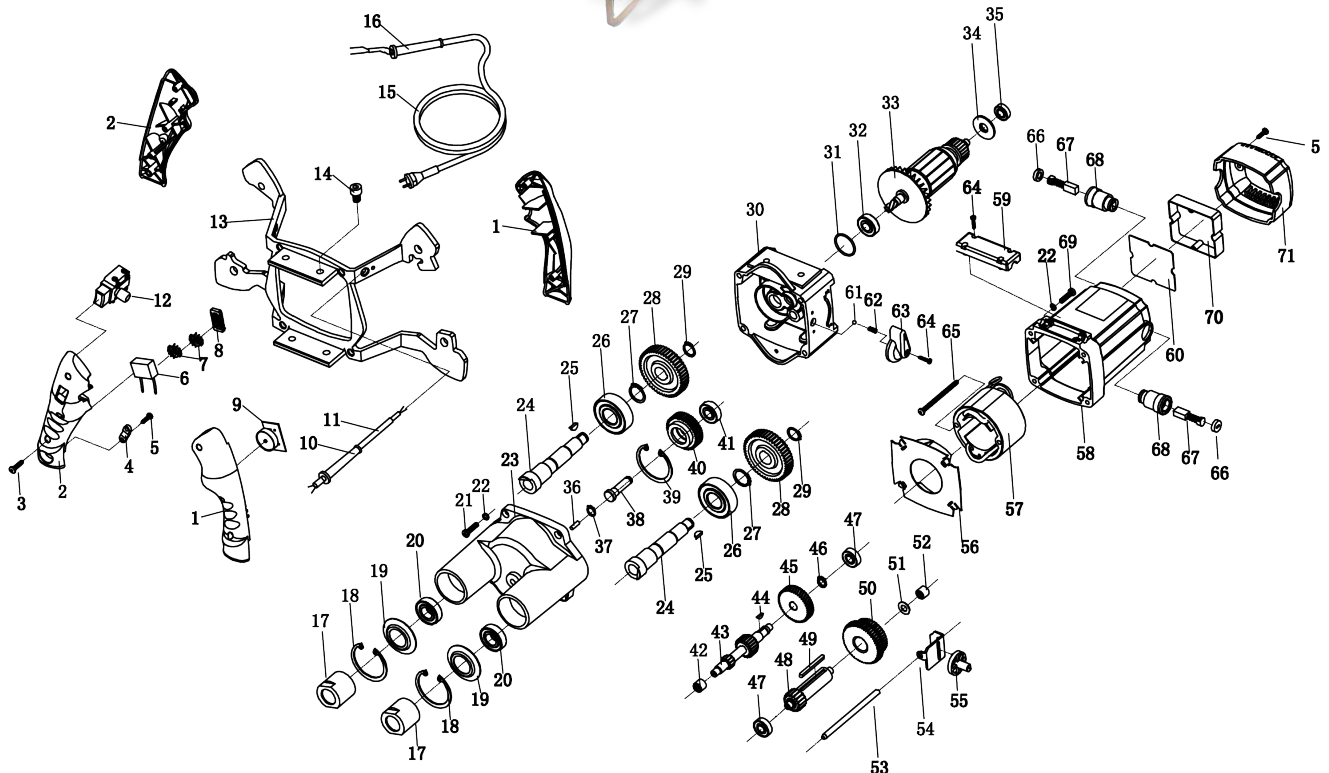
Optional BNRA0315 1/2" Chuck is included with the BNR6169 and the BNR6400



# BN PRODUCTS-USA, LLC.

3450 Sabin Brown Road • Wickenburg, Arizona 85390  
(800) 992-3833 • (928) 684-2813 • [www.bnproducts.com](http://www.bnproducts.com)

## BNR6402K Material Mixer





# BN PRODUCTS-USA, LLC.

3450 Sabin Brown Road • Wickenburg, Arizona 85390

(800) 992-3833 • (928) 684-2813 • [www.bnproducts.com](http://www.bnproducts.com)

## BNR6402K Material Mixer

NO.	ITEM NO.	DESCRIPTION	QTY.
1	BNR6402KP-01	RIGHT HANDLE	1
2		LEFT HANDLE	1
3	BNR6402K-03	SCREW ST3.9X20	6
4	BNR6400-02	CLAMP	1
5	BNR6402K-05	SCREW ST3.5X16	4
6	BNR6402K-06	CAPACITANCE	1
7	BNR6402K-08	ROUND INDUCTANCE	2
8	BNR6402K-07	THE INDUCTANCE	1
9	BNR64000-08	SPEED CONTROL	1
10	BNR6402K-10	SLEEVE (MG)	2
11	BNR6402K-11	CABLE	2
12	BNR6402K-12	SWITCH	1
13	BNR6402KP-13	STEEL FRAME	1
14	BNR6402K-15	SCREW M8X12	4
15	BNR6400-16	CORD	1
16	BNR6400-66	SLEEVE (BIG)	1
17	BNR6402K-18	PADDLE LOCKING COLLAR SET (LEFT AND RIGHT)	1
18	BNR6402K-19	SAFETY RING Ø40	2
19	BNR6402K-20	DUST COVER	2
20	BNR6402K-21	BEARING 6203 Z	2
21	BNR6402K-22	SCREW M5X20	4
22	BNR6402K-23	SPRING WASHER Ø5	8
23	BNR6402K-24	BEARING COVER	1
24	BNR6402K-25	SPINDLE	2
25	BNR6402K-26	HEMICYCLE KEY 3X3X10	2
26	BNR6402K-27	BEARING 6002 Z	2
27	BNR6402K-28	SAFETY RING Ø17	2
28	BNR6402K-29	SPINDLE GEAR	2
29	BNR6402K-30	SAFETY RING Ø12	2
30	BNR6402K-31	GEAR BOX	1
31	BNR6402K-32	SEALRING Ø28*1.9	1
32	BNR6402K-33	BEARING 6001 2RS	1
33	BNR6400-30	ROTOR ASSEMBLY	1
34	BNR6402K-35	M INSULATION GASKET	1
35	BNR6402K-36	BEARING 608 Z	1
36	BNR6402K-37	PIN 4*14	2
37	BNR6402K-38	SAFETY RING Ø9	1
38	BNR6402K-39	REVERSE SHAFT	1

NO.	ITEM NO.	DESCRIPTION	QTY.
39	BNR6402K-40	SAFETY RING Ø26	1
40	BNR6402K-41	REVERSING SLIDING GEAR	1
41	BNR6402K-42	BEARING 6000 ZZ	1
42	BNR6402K-43	NEEDLE BEARING HK0810	1
43	BNR6402K-44	THE SECOND ACTIVE GEAR SHAFT	1
44	BNR6402K-45	HEMICYCLE KEY 2.5X3.7X10	1
45	BNR6402K-46	MOTOR GEAR	1
46	BNR6402K-47	SAFETY RING Ø10	1
47	BNR6402K-48	BEARING 698 Z	2
48	BNR6402K-49	THE THIRD ACTIVE GEAR SHAFT	1
49	BNR6402K-50	PARALLEL KEY 4X4X45	1
50	BNR6402K-51	SPINDLE DOUBLE GEAR	1
51	BNR6402K-52	FLAT WASHER 16*8*0.8	1
52	BNR6402K-53	NEEDLE BEARING HK0808	1
53	BNR6402K-54	PIVOT Ø6*89	1
54	BNR6402K-55	GUIDE	1
55	BNR6402K-56	PARTIAL CORE + ECCENTRIC WHEEL CORE	1
56	BNR6400-52	AIRGUIDE SHIM	1
57	BNR6400-55	THE STATOR (INCLUDING THE BRUSH RING)	1
58	BNR6400-56	MOTOR HOUSING	1
59	BNR6402K-60	CLAMP	1
60	BNR6402K-61	CONSTANT POWER BOARD	1
61	BNR6402K-62	BALL Ø4	1
62	BNR6402K-63	SPRING Ø0.5*Ø3.9*L12	1
63	BNR6402K-64	LEVER	1
64	BNR6402K-65	SCREW ST3X16	5
65	BNR6402K-66	SCREW ST5X65	2
66	BNR6402K-67	BRUSH CAP	2
67	BNR6400-59	CARBON BRUSH 6.5*15*18	2
68	BNR6402K-69	BRUSH HOLDER	2
69	BNR6402K-70	SCREW M5X25	4
70	BNR6400-62	CIRCUIT BOARD SEATS	1
71	BNR6400-63	REAR COVER	1



## **BN PRODUCTS-USA, LLC.**

3450 Sabin Brown Road • Wickenburg, Arizona 85390

(800) 992-3833 • (928) 684-2813 • [www.bnproducts.com](http://www.bnproducts.com)

