

BN PRODUCTS-USA

Tools That Grow Your Business

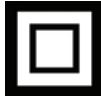


BN Products-USA, LLC.
3450 Sabin Brown Road
Wickenburg, Arizona 85390
(800) 992-3833
mail@bnproducts.com

BNCE-20 Cutting Edge Saw™



BEST OF SHOW!



Double Insulated



A new design in a multipurpose cutting tool that can be used on all kinds of material found on the job. It can easily cut rebar, all-thread rod, locks, chain, EMT conduit, copper pipe, steel rods, steel tubing, and much more. This hand-held tool is lightweight and powered by 1100W motor that only pulls 9 amps using standard 120V/60Hz. It features a three position handle and has a no load speed of 2000 rpm. The capacity of the opening is .875" (23.62mm). This tool is ETL Listed and is excellent for cutting material near flush with concrete or block.

Voltage/Amperage	120V 50-60Hz / 9 amps
Watts	1100W
Blade (2 ea.)	4.375" (110 mm) Tungsten Carbide Tipped
No Load RPM	2,000
Depth of Cut	.860" (21.8 mm)
Length x Width x Height	20.3" (515 mm) x 5.5" (140 mm) x 3.9" (99 mm)
Net Tool Weight	7.6 lbs. (3.5 kg)



BNCE-20-24V Cordless Cutting Edge Saw™

The BNCE-20-24V is a compact and lightweight tool that has a 3-position removable side handle that provides the operator with multiple cutting positions in tight areas. This amazing tool can cut a variety of materials including rebar up to #6 (3/4"), all-thread rod (up to 7/8"), and more. It is designed to cut the material FLUSH with the surface. The tool is designed to emit minimal cutting sparks and the cut material is burr-free. Each BNCE-20-24V has a one year warranty from the date purchase. The BNCE-20-24V comes complete with a AC battery quick charger, two 24V Li-Ion Batteries and two Cutting Edge Blades, a chip collector bag all in a nifty molded carrying case. Uses the same blades as the BNCE-20.



Power	24V Lithium-Ion Battery (2 ea. supplied)
Blade (2 ea.)	4.375" (110 mm) Tungsten Carbide Tipped (2 ea. supplied)
No Load RPM	2,000
Depth of Cut	.860" (21.8 mm)
Length x Width x Height	17 1/4" (438.2 mm) x 5 1/4" (133 mm) x 3 1/4" (82.6 mm)
Net Tool Weight	7.2 lbs. (3.5 kg)
Charger	Standard 120V Quick Charger
Number of cuts per charge	120+ (#5-60 grade Rebar)

BNCE-50 Cutting Edge Saw™



Double Insulated

We have upscaled the size of our standard Cutting Edge Saw™. This award-winning multipurpose cutting tool can be used on all kinds of material found on the job site. Like the original BNCE-20, it can easily cut rebar (up to #8 - 25mm), all-thread rod, EMT conduit, pipe, steel rods, steel tubing, and much more. This hand-held tool is lightweight and powered by 1100W motor that only pulls 9 amps using standard 120V/60Hz. It features a U-shape handle and has a no load speed of 1800 rpm. The capacity of the opening is 2" (50mm). This tool is ETL Listed.

Voltage / Amperage	120V 50-60Hz / 9 amps
Watts	1100W
Blade (2 ea.)	7" (178 mm) Tungsten Carbide Tipped
No Load RPM	1800
Depth of Cut	1.75" (44.5 mm)
Length x Width	21.5" (546 mm) x 8.5" (216 mm)
Tool Height	3.9" (99 mm)
Net Tool Weight	11 lbs. (5 kg)



Replacement Parts for The Cutting Edge Saw™



Available Replacement Blades:

- **RB-BNCE-NH** ~ Standard Replacement blade for the BNCE-20 and BNCE-20-24V
- **RB-BNCE-MESH** ~ Special Mesh Cutting Blade used for the BNCE-20 and BNCE-20-24V
- **RB-BNCE-50** ~ Standard Replacement Blade for the BNCE-50
- **RB-BNCE-50SS** ~ Special Replacement blade for the BNCE-50 (for cutting stainless steel).
- **RB-BNCE-50ST** ~ Special Replacement Blade for the BNCE-50 (for cutting strut).

Additional Parts:

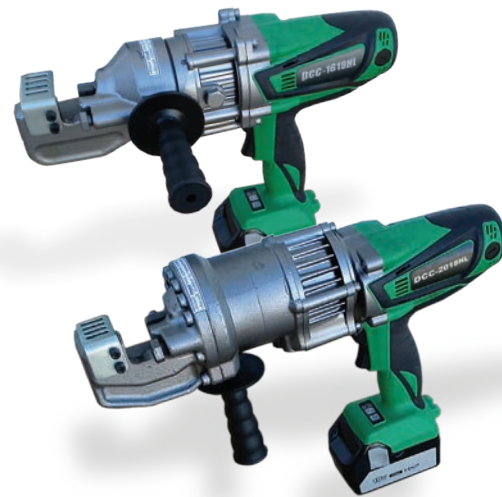
- BNCE-24LI - Replacement 24V Battery for the BNCE-20-24V
- BNCE-24VCHGR ~ Replacement Battery Charger for the BNCE-20-24V
- BNCEP-68 ~ Chip Collector Bag (same for all Cutting Edge Saws)
- BNCEP-50 ~ Carbon Brushes for the BNCE-20 and the BNCE-50

~ ~ ~

CUSTOMER SERVICE; (800) 992-3833

Battery Powered Rebar Cutters

The **DCC-1618HL** and the **DCC-2018HL** cordless rebar cutters will safely and cleanly cut rebar up to 5/8" and 3/4" diameter grade 60 respectively. These self-contained electric/hydraulic units will also cut other items like chain, bolts, and rod. They can be used in rescue operations. It can cut in close proximity to a trapped victim and does not throw sparks. The cutting head on the DCC-1618HL rotates up to 345 degrees for use in vertical, horizontal, or difficult applications. Both have safety relief valves for retracting the piston and a cutting guard as standard features. These tools ship complete with (2) each 18 volt DC batteries, 30-60 minute fast battery charger, removable side handle, plastic carrying case, and a tool kit. We have available a tune-up kits for both models.



Model Number	DCC-1618HL	DCC-2018HL
Maximum Cutting Diameter	5/8" #5 Rebar (16mm) Grade 60	3/4" #6 Rebar (20mm) Grade 60
Cuts per battery /Cutting speed	75 cuts on full charge / 5 seconds	
Li-ion Battery	18 Volt DC, 3.0Ah	
Battery Charger	115 Volt 60 Hz Charger	
Tool Weight	14.75 lbs.(6.6 kg) with battery	21 lbs.(9.5 kg) with battery
Dimensions (w/o side handle) L x W x H	14.75"(374mm) x 4"(101mm) x 12"(240mm)	16.5"(419mm) x 4.25"(107mm) x 12"(304mm)



DC-16LZ Portable #5 Rebar Cutter



The **DC-16LZ** is a medium-duty rebar cutter that will safely, efficiently, and cleanly cut rebar up to #5 (5/8") diameter grade 60. This self-contained electric/hydraulic unit will also cut other items like chain, bolts and rod but is specifically designed for rebar. The DC-16LZ is intended for effortless medium-duty applications on vertical and horizontal rebar cutting applications. This tool would be a great asset for swimming pool, masonry, and ICF contractors. The DC-16LZ is a cold-cutting shear; unlike saws with abrasive blades and cutting torches, there are no sparks or flame. A safety relief valve for retracting the piston and a cutting guard are standard features. Ships complete in a durable plastic carrying case with hydraulic oil and a tool kit. Available Tune-up kit for DC-16LZ electric rebar cutter - TU16LZK.

Maximum Cutting Diameter	5/8" #5 Rebar (16mm) Grade 60
Cutting Speed / Pressure	2 Seconds / 13 Tons
Voltage / Amperage	115V 50/60Hz / 9 Amps
Tool Weight	15 lbs. (6.8 kg)
Dimensions L x W x H	14.8" (380mm) x 6.8" (175mm) x 4.1" (105mm)



Double Insulated

DC-16W Portable #5 Rebar Cutter



Double Insulated

The DC-16W portable heavy-duty rebar cutter will safely, efficiently, and cleanly cut rebar up to #5 (5/8") diameter grade 60. This self-contained electric/hydraulic unit will also cut other items like chain, bolts and rod but is specifically designed for rebar. The DC-16W cutter is designed for effortless vertical and horizontal cutting applications. The DC-16W is a cold-cutting shear unlike saws with abrasive blades and cutting torches. There are no sparks or flame and no trailing hoses to snare equipment or worker's feet. A safety relief valve for retracting the piston and a cutting guard are standard features. Ships complete in a durable plastic carrying case with a removable side handle, hydraulic oil and a tool kit. Available Tune-up kit for DC-16W electric rebar cutter - TU16K.

Maximum Cutting Diameter	5/8" #5 Rebar (16mm) Grade 60
Cutting Speed / Pressure	2.5 Seconds / 15 Tons
Voltage / Amperage	115V 50/60Hz / 10 amps
Tool Weight	17.6 lbs (8 kg)
Dimensions L x W x H (w/side handle)	18" (460mm) x 10.5" (270mm) x 4.5" (115mm)



DC-20WH Portable #6 Rebar Cutter

The DC-20WH portable heavy-duty rebar cutter will safely, efficiently, and cleanly cut rebar up to #6 (3/4") diameter grade 60. DIAMOND originated this concept in 1972; continuous development has led to higher output, lower weight, and even greater toughness and durability. The DC-20WH is a cold-cutting shear unlike saws with abrasive blades and cutting torches. There are no sparks or flame and no trailing hoses to snare equipment or worker's feet. Ideal for cutting epoxy-coated rebar. Fastest, safest, and most economical way to cut rebar on the job. A safety relief valve for retracting the piston and a cutting guard are standard features. Ships complete in a durable plastic carrying case with hydraulic oil and a tool kit. Available Tune-up kit for DC-20XH & WH electric rebar cutters - TU20K.



Maximum Cutting Diameter	3/4" #6 Rebar (19mm) Grade 60
Cutting Speed / Pressure	3 Seconds / 15 Tons
Voltage / Amperage	115V 50/60Hz / 10 amps
Tool Weight	25.4 lbs (11.5 kg)
Dimensions L x W x H	16" (410mm) x 4.3" (110mm) x 8.2" (210mm)

DC-25X Portable #8 Rebar Cutter

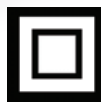
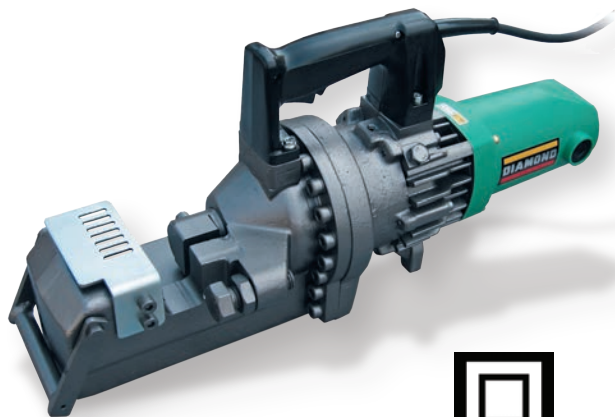
The DC-25X portable heavy-duty rebar cutter will safely, efficiently, and cleanly cut rebar up to #8 (1") diameter grade 60. The DC-25X cutter is ideal for a small fabrication shop. Because our rebar cutters feature a locking trigger switch, the cutter can be operated with a foot pedal switch and our GFI protected electrical outlet. There are no sparks or flame so it also works great on epoxy-coated rebar. It's the fastest, safest, and most economical way to cut rebar on the job. A safety relief valve for retracting the piston and a cutting guard are standard features. Ships complete in a steel carrying case with hydraulic oil and a tool kit. Available Tune-up kit for DC-25X electric rebar cutter - TU25K.



Maximum Cutting Diameter	1" #8 Rebar (25mm) Grade 60
Cutting Speed / Pressure	5 Seconds / 30 Tons
Voltage / Amperage	115V 50/60Hz / 12 amps
Tool Weight	49.6 lbs (22.5 kg)
Dimensions L x W x H	20" (515mm) x 5.9" (150mm) x 9.8" (250mm)



DC-32WH Portable #10 Rebar Cutter



Double Insulated

The DC-32WH portable heavy-duty rebar cutter will safely, efficiently, and cleanly cut rebar up to #10 (1¼") diameter grade 60. The DC-32WH cutter is ideal for bridge and highway work, and in small rebar fabrication shops. This unit is available in combination with a DBD-32X bender on a stand. There are no sparks or flame so it also works great on epoxy-coated rebar. It's the fastest, safest, and most economical way to cut rebar on the job. A safety relief valve for retracting the piston and a cutting guard are standard features. Ships complete in a wooden carrying case with hydraulic oil and a tool kit. Available Tune-up kit for DC-32WH electric rebar cutter - TU32WHK

Maximum Cutting Diameter	1-1/4" #10 Rebar (32mm) - Grade 60
Cutting Speed / Pressure	7 Seconds / 45 Tons
Voltage / Amperage	115V 50/60Hz / 18 amps
Tool Weight	79 lbs (35.8 kg)
Dimensions L x W x H	23.1" (591mm) x 7" (180mm) x 10.6" (272mm)

HB-16W Portable #5 Rebar Bender



90 degree shoe and collar set

The HB-16W portable heavy-duty electric/hydraulic rebar bender helps save valuable man-hours by bending rebar up to 5/8" (#5) grade 60 from 0-135 degrees in-place at the job site. Other features include a double insulated electric motor and a removable bending guide for repeating the same angle bend. A standard 90 degree bending shoe and collar set make it simple to repeat 90 degree bends without a guide. The removable bending collar increases the bending radius and minimizes rebar breakage, especially on #5 grade 60. This portable electric/hydraulic rebar bender ships complete in a steel carrying case with hydraulic oil and a tool kit. Solves bending applications other tools can't even attempt.

Maximum Bending Diameter	5/8" #5 Rebar (16mm) - Grade 60
Bending Angle / Speed	0 - 135 degrees / 8 Seconds
Voltage/ Amperage	115V 50/60Hz / 10 amps
Tool Weight	33 lbs (15 kg)
Dimensions L x W x H	22.8" (584mm) x 7.6" (195mm) x 8" (205mm)



DBC-16H #5 Rebar Cutter/Bender

This DBC-16H portable combination rebar cutter and bender provides job site cutting and bending of rebar all in one tool. The unique design provides the operator the ability to cut and bend rebar for in-place rebar or stationary fabrication applications. Now you have the ability to cut and bend rebar protruding from a wall or column or just fabricate what you need on a table. Our powerful electric/hydraulic design is for heavy-duty #5 (16 mm) grade 60 rebar. It's fast and easy to use, there is no changing of attachments, bends rebar up to 180 degrees. A steel carrying case, tool kit, hydraulic oil and operations manual are included. All of our tools carry a one-year parts and labor warranty.



Cut / Bend Speed	3 seconds /180 degree bend in 7 seconds
Bending Roller	2.42" (62 mm) Diameter (R 31)
Clearance (In-place) Cutting	1-3/4" (44.5 mm) from Surface
Clearance (In-place) Bending	4.5" (115 mm) from Surface
Rebar Capacity	Up to #5 (16mm) Grade 60
Power Supply	Electric motor 115v, 50/60 Hz -10 amps
Total Weight (kg)	40 lbs. (18.2) Tool Weight, 62lbs. (28.2) Shipping Weight
Tool Dimensions	25-1/8" L x 6-3/8" W x 8-5/8" H including lifting handles (cutter up)

DBR-25WH Portable #8 Rebar Bender

The DBR-25WH is a portable heavy-duty electric/hydraulic rebar bender and straightener. It helps save valuable man-hours by cleanly and efficiently bending or straightening bent rebar. It functions as a simple 90-degree portable electric rebar bender. The interchangeable bending hook covers rebar diameters from #4 to #8 grade 60. Maximum pressure for bending and straightening ranges from 8.5 to 11 tons. It's portable and versatile enough to bend or straighten rebar in-place with its push/pull hydraulic capabilities. It will bend a 90-degree angle in only four seconds. The bending head also rotates 360 degrees. Ships complete in a wooden carrying case with hydraulic oil, a tool kit and two additional bending dies.



Small and large bending die set

Maximum Bending Diameter	1" #8 Rebar (25mm) Grade 60
Bending Angle	Up to 94 degrees (1/2") - up to 90 degrees (1")
Voltage / Amperage	115V 50/60Hz / 12 amps
Tool Weight	62.3 lbs (28 kg)
Dimensions L x W x H	25.75" (660mm) x 10.5" (270mm) x 7.8" (200mm)



DBD-16X Portable #5 Rebar Bender



The DBD-16X heavy-duty portable rebar bender helps save valuable man-hours by bending rebar up to #5 (5/8") grade 60 at the job site or in your shop. This strong electrical-mechanical bender has two preset angle locks for repeating the same angle bend. The dial-type angle selector can be set to accurately bend any angle from 0-180 degrees. Bends three each #3 rebar or two each #4 rebar or one each #5 rebar at one time. An emergency stop switch and two side lifting handles are standard features. Ships complete with set of (6) bending rollers in a steel carrying case, a tool kit, and a standard foot pedal control switch for hands-free bending.

Maximum Bending Diameter	5/8" (#5) Rebar (16mm) Grade 60
Bending Angle / Speed	Up to 180 degrees / 5 seconds
Voltage / Amperage	115V 50/60Hz / 10 amps
Tool Weight	90 lbs (40.8 kg)
Dimensions L x W x H	16.6" (425mm) x 12.5" (320mm) x 16.2" (415mm)

DBD-25X Portable #7 Rebar Bender

The DBD-25X heavy-duty portable rebar bender helps save valuable man-hours by bending rebar up to #7 (7/8") grade 60 at the job site or in your shop. This strong electrical-mechanical bender has two preset angle locks for repeating the same angle bend. The lever-type angle selector can be set to accurately bend any angle from 0-180 degrees. An emergency stop switch and two lifting handles are standard features. The DBD-25X portable rebar bender comes complete with a set of six bending rollers in a steel carrying case, a tool kit, a bender cover, and a standard foot pedal control switch for hands-free bending.



Maximum Bending Diameter	7/8" (#7) Rebar (22mm) Grade 60
Bending Angle / Speed	Up to 180 degrees / 6 seconds
Voltage / Amperage	115V 50/60Hz / 12 amps
Tool Weight	190 lbs (86 kg)
Dimensions L x W x H	19" (490mm) x 21.5" (550mm) x 17.2" (440mm)



DBD-25H Portable #8 Rebar Bender

This heavy-duty portable bender helps to save valuable man-hours by effortlessly bending rebar up to #8 (1") grade 60 at job sites or in your shop. This electrical-mechanical bender has two preset angle locks for repeating the same angle bend. The lever-type angle selector can be set to accurately bend any angle from 0-180 degrees. The roller chart makes it easy to select the correct combination of rollers to achieve an inside bending diameter of six times the rebar diameter meeting ACI 318-05 specifications. An emergency stop switch and two lifting handles are standard features. The DBD-25H portable rebar bender comes complete with nine bending rollers in two steel carrying cases, a tool kit, a bender cover, and a standard foot pedal control switch for hands-free bending.



Maximum Bending Diameter	1" (#8) Rebar (25mm) Grade 60
Bending Angle / Speed	Up to 180 degrees / 9 seconds
Voltage / Amperage	115V 50/60Hz -15 amps
Tool Weight	210 lbs. (95 kg)
Dimensions L x W x H	21" (540mm) x 22.6" (580mm) x 17.2" (440mm)

DBD-32X Portable #9 Rebar Bender



The DBD-32X is a heavy-duty portable table-type bender. This unit is the largest 115 volt portable rebar bender available. This powerful electrically driven mechanical unit will easily bend 1-1/8" grade 60 rebar 180 degrees in only 8 seconds. This fast and accurate bender is a valuable tool for small to medium size production shops. It comes standard with a hands-free foot pedal control switch and a complete bending radius roller set. An optional stand is also available.

Maximum Bending Diameter	1-1/8" (#9) Rebar (29mm) Grade 60
Bending Angle / Speed	Up to 180 degrees / 8 seconds
Voltage / Amperage	115V 50/60Hz / 12 amps
Tool Weight	397 lbs (180 kg)
Dimensions L x W x H	23" (590mm) x 24.2" (620mm) x 18.7" (480mm)



DBC-25H #8 Combination Rebar Bender/Cutter

The DC-25X rebar cutter can be removed and used in a portable application or secured in the stationary position with U-bolts and operated hands-free by the convenient foot pedal switch. This is a combination of the very popular DC-25X rebar cutter and our new DBD-25H rebar bender together on a heavy-duty powder-coated skidded housing. The bender meets all ACI 318-05 specifications. A toggle switch allows you to go from bending to cutting and both are operated hands-free with a foot pedal. The GFI plug is a standard safety feature. This combination unit is easy to maintain and is backed with a one-year parts and labor warranty. The unit is shipped fully assembled and includes two steel cases with nine bending rollers and a #1BR5130 foot pedal control switch.



	DC-25X Rebar Cutter	DBD-25H Rebar Bender
Cut / Bend Speed	5 seconds	180 degree bend in 9 seconds
Rebar Capacity	Grade 60 Up to #8 (1")	Grade 60 up to #8 (1")
Power Supply	Electric motor 115v, 50/60 Hz -12 amp Cutter, 15 amp Bender	
Total Weight	321 lbs. Total Weight, 49.6 lbs. Cutter, 210 lbs. Bender	
Dimensions	32.75" L x 28" W x 22.50" H including lifting handles	

DBC-2520 & DBC-2525 Combination Rebar Bender/Cutter

These are essential combination rebar bender and cutter units. They simply combine the very popular DBD-25X bender with the DC-20WH or DC-25X rebar cutter both together on a stationary stand. The main advantage to owning this versatile combination unit is that the rebar cutter can be simply removed and used in any portable application or locked into a stationary position and then operated by a standard foot pedal switch. The other advantage is production; the bender table is at the ideal working height and the DBD-25X bends rebar from 0 -180 degrees. The BCSE-25X combination stand joins the bender and cutter both together.



	DBC-2520	DBC-2525
Max. Cutting	#6 or 3/4" Grade 60	#8 or 1" Grade 60
Max. Bending	#7 or 7/8" Grade 60	#7 or 7/8" Grade 60
Cutter Power	115 Volt 50 / 60 Hz -10 amps	115 Volt 50 / 60 Hz -12 amps
Bender Power	115 Volt 50 / 60 Hz -12 amps	115 Volt 50 / 60 Hz -12 amps
Total Weight	250 lbs. (113.5 kg)	274 lbs. (124.5 kg)
Dimensions	19.25" (490mm) L x 24.75" (629mm) W x 37.25 (946mm) H	



DBC-3225 & DBC-3232 Combination Rebar Bender/Cutter



These are essential combination rebar bender and cutter units. They simply combine the very popular DBD-32X bender with the DC-25X or DC-32WH rebar cutter both together on a stationary stand. The main advantage to owning this versatile combination unit is that the rebar cutter can be easily removed and used in any portable application or locked into a stationary position and then operated by a standard foot pedal switch. The other advantage is production; the bender table is at the ideal working height and the DBD-32X bends rebar from 0 -180 degrees. The BCSE-32X combination stand joins the bender and cutter both together.

	DBC-3225	DBC-3232
Max. Cutting	#8 or 1" Grade 60	#10 or 1-1/4" Grade 60
Max. Bending	#9 or 1-1/8" Grade 60	#9 or 1-1/8" Grade 60
Cutter Power	115 Volt 50 / 60 Hz -12 amps	115 Volt 50 / 60 Hz -18 amps
Bender Power	115 Volt 50 / 60 Hz -12 amps	115 Volt 50 / 60 Hz -12 amps
Total Weight	482 lbs. (219 kg)	511 lbs. (232 kg)
Dimensions	23" (590mm) L x 27" (686mm) W x 37.25 (946mm) H	

New BNT-40 Rebar Tying Tool

This electric rebar tying tool is lightweight and has a compact, easy to hold body. It runs on a 14.4V Lithium-Ion quick-charge battery that drives a brushless twisting motor.

On two No.6 rebars this tool will make over 2000 ties on a single charge. It comes with two batteries, a charger and four spools of wire ready to use. This tools will save you time and money. Its also a handy tool for tying wire mesh.



Maximum Tying Diameter	40mm (2 #6 Bars)
Battery (75 min quick charge)	DC14.4 V
Weight	4.85 lbs. (2.2kg)
Turns per tie	3 Wraps
Ties per Coil	Up to 128
Ties per Charge	Up to 2,500
Wire Size	21 GA
Length of wire per tie	31" (780mm)
Dimensions (L) x (W) x (H)	11.22" x 3.94" x 11.65" (285mm x 100mm x 296mm)



New BNT-58 & BNT-25 Rebar Tying Tools

These electric rebar tying tools are lightweight and has a compact, easy to hold body. It runs on a 14.4V Lithium-Ion quick-charge battery that drives a brushless twisting motor.

Like our standard BNT-40 above the larger BNT-58 is designed for tying up to two number #8 rebars and the BNT-25 is designed to conserve wire by tying up to a #3 and a # 4 rebar. It comes with two batteries, a charger and four spools of wire ready to use. Its also a handy tool for tying wire mesh.



Products Number	BNT-58	BNT-25
Maximum Tying Diameter	58mm (2 #8 Bars)	25mm (#3 x #4 Bars)
Battery (75 min quick charge)	DC14.4 V	DC14.4 V
Weight	5.85 lbs. (2.7kg)	4.85 lbs. (2.2kg)
Turns per tie	3 Wraps	3 Wraps
Ties per Coil	Up to 92	Up to 159
Ties per Charge	Up to 2,500	Up to 2,500
Wire Size	21 GA	21 GA
Length of wire per tie	42.75" (1085mm)	24.75" (629mm)
Dimensions (L) x (W) x (H)	11.22" x 3.94" x 12.32" (285mm x 100mm x 313mm)	11.22" x 3.94" x 11.06" (285mm x 100mm x 281mm)

Replacement Parts for The BNT Automatic Rebar Tiers



• BNT-40-Wire	Galvanized 21 gauge/triple tie wire in a 50 spool carton - shipping weight: 46 lbs.
• BNT-40-WIRE-USA	Black 21 gauge/triple tie wire in a 50 spool carton - weight 46 lbs. - MADE IN THE USA
• BNT-40-WIRE-P	Polyester coated galvanized 21 gauge/triple tie wire in a 50 spool carton - weight: 46 lbs.



• BNTLI-300 Replacement Battery	Replacement 14.4V Lithium-ion Battery
• BNTLI-196B Replacement Charger	Replacement Charger
• BNH-40 Holster	Holster for the BNT-40 Rebar Tier
• BNEX-40	Arm Extension Option for the BNT-40 Rebar Tier



MBC-16B Manual Rebar Bender/Cutter

This tool has a longer handle and a cam mechanism that provides greater leverage when cutting and bending grade 60 rebar. It features an adjustable 2-1/2" (63.5mm) diameter bending roller cam and replaceable cutting jaws that incorporate two open slots with innovative shaped blades to prevent chipping. The sturdy frame design is firmly mounted on a 2" x 8" x 60" wooden board and is ready to use. Other features include a comfortable 12" long no-slip handle grip and a lifting chain and ring to make it easier to carry to and from the job site.



Cutting and Bending Capacity	Up to #5 (5/8") (16 mm) rebar grade 60 (420 MPa)
Bending Capability	0 - 180°
Replacement Jaw Set	#MBC-16RJS - Weight: 7 lbs. (3.2 kg)
Shipping Weight	57 lbs. (26 kg) with wood board
Overall Dimensions	60.5" L x 7.5" W x 10" H

BNHYBR Hickey Bars

These are perfect tools for bending rebar in tight places. Excellent for bending rebar in sizes 3, 4, & 5 (10mm, 13mm, & 16mm). Often the tool is used as a pair when making close radius bends. We have four models available Maximum Capacity is 5/8" #5 (16mm) rebar.



BNHYBR-16
30" Steel Tube Handle



BNHYBR-21401
27.5" adjustable with a Round End



BNHYBR-21402
27.5" adjustable with a Wrecking End



BNHYBR-21404
27.5" adjustable with a Chisel End



BNBCS Standard Bolt Cutters

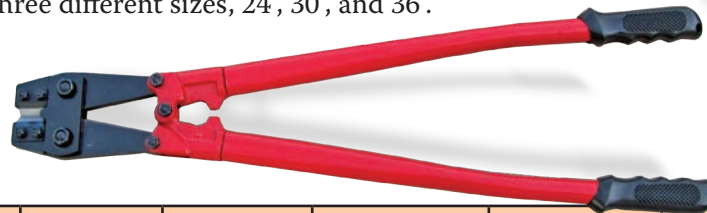
Like most high tensile bolt cutters, these tools use a center-cut configuration available in six lengths from 14" to 42". The head is slim enough to allow cutting close to the surface. The cutting jaws are made from CrV hardened forged alloy steel.



Item ID	Overall Length	Max Cap. HRC-48	Max Cap. HRC-19	Wt. (kg)	Replacement Jaws
BNBCS-14	14 5/8" (350mm)	3/16" (5mm)	5/16" (8mm)	2.35 lb. (1.07)	RB-BNBCS-14H
BNBCS-18	18 1/2" (450mm)	1/4" (7mm)	3/8" (10mm)	3.6 lb. (1.63)	RB-BNBCS-18H
BNBCS-24	24" (600mm)	5/16" (8mm)	7/16" (11mm)	5.65 lb. (2.56)	RB-BNBCS-24H
BNBCS-30	30" (750mm)	3/8" (10mm)	1/2" (13mm)	8.6 lb. (3.9)	RB-BNBCS-30H
BNBCS-36	36" (900mm)	7/16" (11mm)	9/16" (14mm)	11.05 lb. (5.01)	RB-BNBCS-36H
BNBCS-42	42" (1050mm)	1/2" (13mm)	5/8" (16mm)	17.25 lb. (7.82)	RB-BNBCS-42H

BNBC Triple-Edge Bolt Cutters

The BN Products **Triple-Edge Bolt Cutter** unlike our standard models have three durable cutting edges instead of just one that eventually wears out over a period of time. The blades on this new model bolt cutter are made of special hardened alloy tool steel for a long lasting and more durable life. Along with having three durable edges, it comes with handles and grips that are designed for better mechanical leverage and control. This one-of-a-kind tool comes in three different sizes, 24", 30", and 36".



Model	Size	Net Weight	Max. Capacity	Max. Capacity	Max. Capacity
Number	Inch (mm)	(kg)	HRC15 (1)	HRC31 (2)	HRC42 (3)
BNBC-24	24" (600)	5.8 (2.6)	7/16" (11 mm)	3/8" (9.5 mm)	5/16" (8 mm)
BNBC-30	30" (750)	8.8 (4.0)	1/2" (13 mm)	7/16" (11mm)	3/8" (9.5 mm)
BNBC-36	36" (900)	13.5 (6.1)	9/16" (14 mm)	1/2" (13mm)	7/16"(11 mm)

1. Soft Metals include soft steel and non ferrous metals, bolts, screws, rivets, rod, chain and wire.
2. Medium Metals include iron and steel, bolts, screws, rivets, rod, chain, and wire.
3. Hard Metals include stainless wire, spring steel, heat treated rod, and grade 60 reinforcing rod



BNR7231A Drywall Sander

This Drywall and Plaster Sander is capable of sanding walls and ceilings. It provides you with a way to reach the entire wall from floor to ceiling. Just use the built-in extensions to change the length of the tool from 4 ft. to 7.2 ft. long. With extension you can easily reach up to 12 1/2 ft. It has a removable brush segment that allows the edge of the sanding paper to come right up to the wall edge. The tool can be folded in half to reduce the length of the tool and includes a carrying case. The motor is mounted on the sanding head to reduce the number of moving parts and provides a direct drive to the sanding head. Center and edge vacuum locations provide a large area of dust collection. Just mate the sander up with a vacuum to ensure minimum dust in your working environment.



Model	BNR7231A
Power	600W
Voltage	120V/60HZ
No Load Speed	0-1000 rpm
Sanding Motion	Rotation
Sanding Pds (dia.)	9"
Abrasives (dia.)	9"
Connection for dust Extraction (dia.)	1.5"/1.25"
Weight	10.3 Lbs.

Hand Held Power Mixers

The BNR6169 Hand Held Paddle Mixer

Power	1050W / 9 amps / 1.4 Hp
Voltage	120V/60Hz
Number of Gears	1
No Load Speed	0-600 rpm
Drill Capacity	1/2" (13mm)
Motor Protective Type	Double Insulated
Mixing Paddle (ø Max.) BNR003-120	4-3/4" (120mm)
Shipping Weight	13.25 lbs (6 Kg)



The BNR6169 Hand Held Mixer has a variable speed trigger with a lock-on button for continuous operation. It comes with a standard M14 paddle connection or 1/2" drill chuck for any mixing paddles. The rear D-handle rotates 360° and the tool comes with a 3-position removable side handle. Includes BNR003-120 paddle and carrying case.

The BNR6400 Professional Mixer

Power	1800W / 15 Amps / 2.4Hp
Voltage	120V/60Hz
Number of Gears	2
No Load Speed I	150 - 300 rpm
No Load Speed II	300 - 700 rpm
Motor Protective Type	Double Insulated
Mixing Paddle (ø Max.) BNR001-160	6-1/2" (160mm)
Shipping Weight	21 lbs (8.5 Kg)



The BNR6400 Professional Mixer has ergonomically designed handles with a soft grip feature. The 2-speed power mixer motor incorporates a soft start feature with a variable speed control settings. Safety on/off switch also has a lock-on button for continuous operation. The tool uses a heavy-duty gearbox with a powerful high torque motor specially designed for mixing. Includes a BNR001-160 paddle, 1/2" drill chuck and M14 adapter

The BNR7000 TwinMaster Mixer

Power	1400W / 11.7 amps / 1.9 Hp
Voltage	120V/60Hz
Number of Gears	1
No Load Speed	270 - 460 rpm
Drill Capacity	1/2" (13mm)
Motor Protective Type	Double Insulated
Mixing Paddle (ø Max.) BNR007-140	5-1/2" (140mm) <i>Specially designed to spin in two directions at the same time</i>
Shipping Weight	16.5 lbs (7.5 Kg)



The BNR7000 TwinMaster Mixer has ergonomically designed handles with a soft grip feature. This unique mixer includes our BNR007-140 TwinMaster™ mixing paddle that actually spins in two directions at the same time virtually eliminating bucket spin.

The BNR6402K Double Paddle Professional Mixer

Power	1800W / 15Amps / 2.4 Hp
Voltage	120V/60Hz
Number of Gears	2
No Load Speed I	180 - 460 rpm
No Load Speed II	300 - 700 rpm
Motor Protective Type	Double Insulated
Mixing Paddles (2) (ø Max.) BNR008-120K	4-3/4" (120mm)
Shipping Weight	23 lbs (10.4 Kg)



The BNR6402K Pro Double Mixer has ergonomically designed handles with a soft grip feature. The 2-speed power mixer motor incorporates a soft start feature with a variable speed control settings. Safety on/off switch also has a lock-on button for continuous operation. The tool uses a heavy-duty gearbox with a powerful high torque motor specially designed for mixing. Includes our BNR008-120K mixing paddles

Paddles for the BN Power Mixers



BNRA0315	1/2" Drill Chuck
BNR001 - Specify Diameter	120 mm (4.75") or 140 mm (5.50") or 160 mm (6.30") • Overall length: 60 cm (24") • Designed for plasters, adhesive mortars, mortars, tile adhesives and fillers, best for sticky and viscous materials. • Material Flow: Bottom to Top • Connection: M14 x 2 male threads
BNR002-57	Diameter: 57 mm (2.25") • Overall length: 13.5" • Designed for paints, lacquers, thin coatings, and ready-mix plaster. • Material Flow: Top to Bottom • Connection: 5/16" hex shank
BNR003- Specify Diameter	120 mm (4.75") or 140 mm (5.50") or 160 mm (6.30") • Overall length: 60 cm (24") • Designed for concrete, mortars, plasters, heat-insulating plasters, and epoxy resin with sand, best for heavy and high viscosity materials. • Material Flow: Top to Bottom • Connection: M14 x 2 male threads
BNR004- Specify Diameter	120 mm (4.75") or 140 mm (5.50") • Overall length: 60 cm (24") • Designed for thinset, tile adhesive, grout, adhesive mortars, ready-mix mortars, and pointing mortars, and fillers, best for small volumes on high speed mixers. • Material Flow: Bottom to Top • Connection: M14 x 2 male threads
BNR005-120	Diameter: 120 mm (4.75") • Overall length: 60 cm (24") • Designed for plasters, adhesive mortars, tile adhesive and fillers, best for sticky and viscous materials. • Material Flow: Bottom to Top • Connection: M14 x 2 male threads



BNR006-100	Diameter: 100 mm (3.875") • Overall length: 60 cm (24") • Designed for paints, lacquers, glazings, primers, and paste, best for small volumes of low viscosity materials • Recommended to use on BNR6169. • Material Flow: Top to Bottom • Connection: M14 x 2 male threads
BNR007-140	Diameter: 140mm (5-1/2") • This is a special paddle that fits the BNR7000 TwinMaster Mixer™. It turns in two directions at the same time.
BNR008-120K Paddles sold in pairs left & right	Diameter: 120 mm (4.75") Overall length: 60 cm (24") • Designed for concrete, cement, mortars, and grouts with aggregate less than 3/8" diameter. Also for gypsum lime plaster, fibrated aluminum roof coatings and paints. Not for highly viscous materials. • Material Flow: Top to Bottom • Connection: 13 mm or 1/2" Hex Shank, for BNR6402K mixer.
BNR009-Specify Diameter	120 mm (4.75") or 140 mm (5.50") • Overall length: 60 cm (24") • Designed for fillers, bitumen coatings, joint cement, epoxy-resin compounds, and grouting compounds, best for prevention of lump formation and lessens adding air into the mixture. Mixture flow is parallel. • Connection: M14 x 2 male threads
BNR010-Specify Diameter	120 mm (4.75") or 140 mm (5.50") • Overall length: 60 cm (24") • Designed for gypsum-lime plaster, fibrated aluminum roof coatings, and paints. This paddle can be disassembled in two pieces and fit into a carrying case. • Material Flow: Top to Bottom • Connection: M14 x 2 male thread

BNMS-6400 Professional Mixing Station

This is the ultimate mixing station for self-levelling materials, compounds, and epoxies, producing the perfect mix every time.

Our BNMS-6400 provides efficient hands-free mixing; enabling fast precision pouring of materials. It mixes up to 220 lbs. (22 gal bucket) in minutes. The mixing bucket comes complete with a removable dust splash cover to keep your job clean. The Station is lightweight with "easy tilt" for control and balance. It is also equipped with a built-in timer (for those jobs that require a timed mix) and ergonomic handles for precision pouring. The heavy duty casters (including one that locks) are built for portability and movement while pouring. The BNMS-6400 station has Two Gear settings for 150 to 700 RPM's variable speed mixer. This is a heavy duty 1800W tool built for the really tough jobs. The mixer has a Soft-Start with lock-on feature and is double insulated, with 12' power cord. Comes complete with a BNR001-160 M14 mixing paddle (6-1/2" 160mm diameter). Can be ordered as BNMS-100 without the mixer.



BN PRODUCTS-USA, LLC.
Wickenburg, Arizona

Customer Service: (800) 992-3833
www.bnproducts.com

BN Portable Job-Site Generators

Our 4-cycle generators are compact, high performance power-houses. All of our models are air-cooled, gasoline driven units that are designed to supply electrical power to operate electrical loads on job sites, or in remote locations where utility power is unavailable or in place of a electric utilities due to a power outage. The emission control system for these generators are warranted for standards set by the Environmental Protection Agency and also the California Air Resources Board (CARB). The output receptacles include 12V, 8.3A DC, 120V 20A GFCI and, 120/240V AC 30A Twist Lock. Each unit comes complete with stand legs, solid rubber wheels and a pull handle for convenient mobility. All models are equipped with a key-start, low oil shut-off switch, a circuit breaker, and a fuel level gauge.



BNG3000



BNG5000



BNG6500



BNG7500



BNG7500-D4



BNG9000

Available in six models:

BNG3000	3000W rated power - key electric start - CARB certified - with GFCI plugs
BNG5000	5000W rated power - key electric start - CARB certified - with GFCI plugs
BNG6500	6500W rated power - key electric start - CARB certified - with GFCI plugs
BNG7500	7500W rated power - key electric start - CARB certified - with GFCI plugs
BNG7500-D4	7500W rated power - key electric start - CARB certified - with GFCI plugs
BNG9000	9000W rated power - key electric start - CARB certified - with GFCI plugs

New BN Portable Inverter/Generators

Clean and stable power for cell phones and electronics, we now offer two new inverter/generators. Both are lightweight, versatile and quiet. They have smart speed regulation to save fuel and are EPA and CARB certified. Features include a low oil indicator light with automatic shut-off, overload and fault indicators, rain port covers and standard USB, duplex, 12V DC power plugs and has parallel capability and cables.



BNG2000i	1600W rated power - Pull start - CARB certified - with GFCI plugs
BNG3300i	3000W rated power - key electric start - CARB certified - with GFCI plugs

The BNCP-100 Cordless Rivet Gun (18V Lithium-Ion)

The BNCP-100 Cordless Rivet Gun provides a great solution to your riveting needs. At 3.51 pounds, the BNCP-100 is light weight for less fatigue. The 2 Lithium-Ion batteries included with the kit will do 700 rivets per charge, per battery. Four mandrel sizes included in the carrying case. The convenient mandrel collector keeps the job site clean and safe.



Model No.	BNCP-100
Batteries	(2 included) 18V Lithium-ion fast charge
Recharge time	≤ 60 mins
Rivets per charge	700
Stroke	.83"
Mandrel die sizes	3/32" (2.4mm), 1/8" (3.2mm), 5/32" (4.0mm), 3/16" (5.0mm)
Installation Force	2,025 lbf / 9,000N
Tool weight	3.51 lbs.
Shipping Dimensions	18.0" x 15.0" x 5.0"
Additional notes:	<ul style="list-style-type: none"> • Screw-off mandrel waste catcher • Blow-molded carrying case • Can handle aluminum, metal and stainless steel type rivets • Battery charger



The Sigma Series Professional In-Shop Rebar Cutters



SIGMA heavy duty rebar cutters have robust alloy casting bodies and hardened gear and clutch systems coupled with industrial motors. The rebar cutter has capacity to cut high tensile rebar. It is semi-portable and can be operated with minimum effort. The cutting blades are designed so that you can rotate the shearing edge on all eight sides.

Model No.	DCM-32		DCM-40	
Number of bars	1	2	1	2
Grade 60	#10 (32mm)	#6 (20mm)	#11 (40mm)	#8 (25mm)
Technical Specifications				
Width	21.65" (550mm)		21.65" (550mm)	
Length	40.35" (1025mm)		46.50" (1180mm)	
Height	29.50" (750mm)		33" (840mm)	
Motor	5 hp (3.7 kw)		7.5 Hp (7.5 kw)	
Frequency	50/60 Hz		50/60 Hz	
Voltage	220 AC		220 AC	
Weight	805 lbs (365 Kg)		1047 lbs (475 Kg)	
Rotation (RPM)	1400 RPM		1400 RPM	
DCH-40 Hydraulic Model is also available for cutting up to #11 rebar				



Sigma Series Professional In-Shop Rebar Benders

Our production rebar benders are used to accurately shape reinforcement bars. They are equipped with high-quality gears and motors and are easy to program and use. They can be used to bend in both directions. The frame and housing are powder coated durability and the gear boxes are fabricated with specially heat treated alloy steel.



DBM-25S Production Rebar Bending Machine	
Capacity	#8 (25mm), Grade 60 Rebar
Width x Length x Height	21.65" (650mm) x 40.35" (880mm) x 29.50" (860mm)
Motor	5 hp (3.7 kw), 50/60 Hz, 220 AC
Weight	772 lbs (350 Kg)
Gear Motor Type	Planerary Gear Motor
This tool is capable of bending #8 (25mm) grade 60 rebar or 2 #6 (20mm) or 3 # 5 (16mm)	



DBM-32P Production Rebar Bending Machine	
Capacity	#10 (32mm), Grade 60 Rebar
Width x Length x Height	32.25" (820mm) x 39.25" (1000mm) x 33.85" (860mm)
Motor	5 hp (3.7 kw), 50/60 Hz, 220 AC
Weight	992 lbs (450 Kg)
Gear Motor Type	Planerary Gear Motor
This tool is capable of bending #10 (32mm) grade 60 rebar or 2 #6 (20mm) or 3 # 4 (12mm)	



DBM-40P Production Rebar Bending Machine	
Capacity	#11 (40mm), Grade 60 Rebar
Width x Length x Height	32.25" (820mm) x 75.50" (1460mm) x 33.85" (860mm)
Motor	7.5 hp (5.5 kw), 50/60 Hz, 220 AC
Weight	1300 lbs (590 Kg)
Gear Motor Type	Planerary Gear Motor
This tool is capable of bending #11 (32mm) grade 60 rebar or 2 #6 (20mm) or 3 # 4 (12mm)	



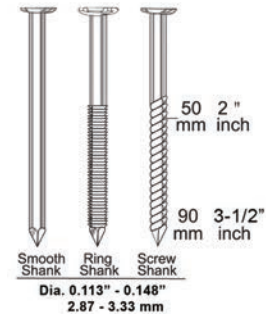
DSX-25 Production Rebar Spiral Bending Machine	
Capacity	#8 (25mm), Grade 60 Rebar
Minimum Spiral Bending ϕ	11" (280mm)
Width x Length x Height	28.95" (710mm) x 44.00" (1120mm) x 38.50" (980mm)
Motor	5 hp (3.7 kw), 50/60 Hz, 220 AC
Weight	661 lbs (300 Kg)
Gear Motor Type	Planerary Gear Motor
The DSX-32 model is also available. This tool is made for bending up to #10 (32mm) rebar. This is a 7.5 hp (5.5 kw), 50/60 Hz, 220 AC production machine	



RHF9021 Non-Adjustable 21° Framing Nailer

- Large piston offers increased power (German steel)
- Contact and tripper safety system protects the operator
- A tool hook is standard
- Sequential fire
- Package includes nailer, lubrication oil, Allen wrenches, eye protection and an operating manual

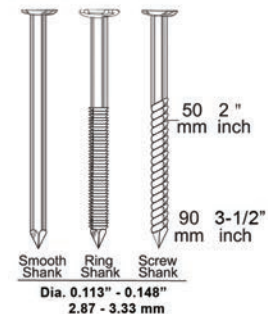
Nail Capacity	2 x 30 pieces
Fastener Length	2" to 3-1/2" (50-83mm)
Fastener Diameter	.113-.148" (2.87-3.76mm)
Magazine Angle	21° +/-1°
Collation	Plastic
Air Inlet & Operating Pressure	3/8" - 80-120 PSI (5.5-8.3 bar)
Dimensions	20-3/4 x 10-1/4 x 4-1/4" (530 x 260 x 108mm)
Weight	7.93 lbs. (3.96 kg)



RHF9021-A Adjustable 21° Framing Nailer

- Adjustable depth of drive
- Large piston offers increased power (German steel)
- Contact and tripper safety system protects the operator
- A tool hook is standard
- Single fire or sequential fire is selectable
- Package includes nailer, lubrication oil, Allen wrenches, eye protection and an operating manual

Nail Capacity	2 x 30 pieces
Fastener Length	2" to 3-1/2" (50-83mm)
Fastener Diameter	.113-.148" (2.87-3.76mm)
Magazine Angle	21° +/-1°
Collation	Plastic
Air Inlet & Operating Pressure	3/8" - 80-120 PSI (5.5-8.3 bar)
Dimensions	20-3/4 x 10-1/4 x 4-1/4" (530 x 260 x 108mm)
Weight	7.93 lbs. (3.96 kg)

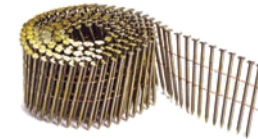


CN83 Coil Framing Nailer



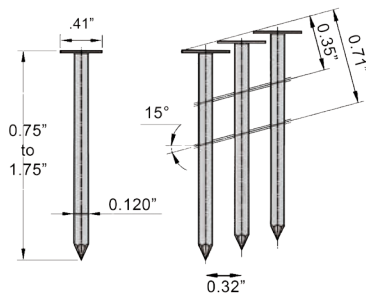
- Lightweight and well balanced for easy operation
- Superior power with a hardened one-piece piston driver.
- Open nose design for easy extraction of jammed nail
- Tool free depth-of-drive adjustment for flush or countersink drive into various materials
- Hardened claw tip reduces wear and limits slippage
- Drives nails 1-3/4" to 3-1/4" x .131"
- Package includes nailer, lubrication oil, Allen wrenches, eye protection and an operating manual

Nail Capacity	225-300
Fastener Length	2" to 3-1/4" (50-83mm)
Fastener Diameter	0.099-.131" (2.5-3.3mm)
Magazine Angle	15°
Collation	Wire
Air Inlet & Operating Pressure	3/8" (10mm) - 70-120 PSI (4.8-8.3 bar)
Dimensions	12.4 x 14.1 x 5.4" (315 x 359 x 136 mm)
Weight	8.75 lbs. (3.98 kg)



CN45RA Professional Heavy Duty Coil Roofing Nailer (3/4" to 1-3/4")

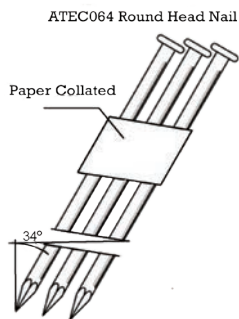
- Comfortable rubber grip for ease of use and control
- Firing Method: Contact trip
- Package includes nailer, lubrication oil, Allen wrenches, eye protection, and an operating manual
- Great for roofing and installation of fiber cement products



Nail Capacity	120
Fastener Length	3/4" to 1-3/4" (19-45mm)
Fastener Diameter	.098-.120" (2.5-3.05mm)
Magazine Angle	15°
Collation	Wire
Air Inlet & Operating Pressure	3/8" -- 80-120 PSI (5.5-8.3 bar)
Dimensions	11-1/8 x 10-5/8 x 5-1/8" (307 x 281 x 120 mm)
Weight	6.3 lbs. (2.86 kg)

TECO64 Metal Connector Nailer

- Compact design fits between 12" O.C. joists
- Low nail lockout prevents dry fires
- Advanced safety system prevents misfires
- Exposed nail tip design fires in the hole for faster, more precise nailing
- Applications include strapping, joist hangers, hurricane ties, rafter ties and connectors, post bases, caps and anchors
- Package includes nailer, lubrication oil, Allen wrenches, eye protection, carrying case and an operating manual



Nail Capacity	24
Fastener Length	1-1/2" (38mm)
Fastener Diameter	.131-.148" (3.33-3.76mm)
Magazine Angle	34°
Air Inlet & Operating Pressure	1/4" NPT -- 90-120 PSI (6.2-8.3 bar)
Dimensions	12-1/2" x 4-1/2" x 12-1/4" (319 x 113 x 309 mm)
Weight	6.83 lbs. (3.1 kg)



MSN90 Palm Nailer

- Magnetic nose hold nails in place
- Drives common nails from 1-3/4" to 3-1/4" (5d to 16d)
- Long-life German tool steel driver
- Applications include nailing joist hangers, hurricane ties, rafter ties and pole barns
- Package includes tool and instruction manual

Nail Capacity	1
Fastener Length	1-3/4"-3-1/4" (50-83mm) 5d-16d
Fastener Diameter	.109-.238" (2.77-6.05mm)
Magazine Angle	none
Collation	none
Air Inlet & Operating Pressure	1/4" NPT -- 70-100 PSI (5-7 bar)
Dimensions	4 x 3 x 4" (103 x 53 x 103 mm)
Weight	0.8 lbs. (0.35 kg)