



**BN Products-USA™**

**JMB-25H**

**#8 Portable Rebar Bender**

# RE-BAR BENDER USER MANUAL



**REBAR BENDER JMB-25H**

130 135 90 45 0

BENDING ROLLER SELECTION		
BAR DIA.	CENTER ROLLER	MOVING ROLLER
#8 3" (20mm)	Roll 7 - 2.53" (64mm)	Roll 3 - 2.54" (65mm)
#7 2 7/8" (19mm)	Roll 8 - 2.53" (64mm)	Roll 2 - 2.48" (63mm)
#6 3/4" (18mm)	Roll 6 - 4.47" (113mm)	Roll 5 - 4.40" (112mm)
#5 1/2" (14mm)	Roll 5 - 2.87" (73mm)	Roll 4 - 3.40" (86mm)
#4 1/2" (11mm)	Roll 2 - 2.87" (73mm)	Roll 1 - 5.18" (132mm)
#4 1/4" (11mm)	Roll 3 - 2.87" (73mm)	Roll 8 - 6.48" (165mm)
#4 1/8" (10mm)	Roll 1 - 2.87" (73mm)	Roll 9 - 3.14" (80mm)

JCF MACHINERY CO., LTD.  
MADE IN JAPAN.

**Model : JMB-25H**

Thank you very much for purchasing our Reinforcing Bar Bender (JMB-25H).

Please read this manual carefully to ensure safe use of the Bender.

Failure to comply with the instructions in this manual may lead to accident and injury. Therefore, make sure to operate the machine in compliance with the instructions.

We are not liable for any damage caused to the machine or injury to the operator resulting from unauthorized modification of the machine or the use of parts that are not genuine.



## Contents

- 3 1. Basic Specifications and Performance
- 4 2. Installation and Work Preparation
- 5 3. Periodic Checking and Maintenance
- 6 4. Precautions
- 6 5. Repairs and Security
- 7 6. Exploded Drawings

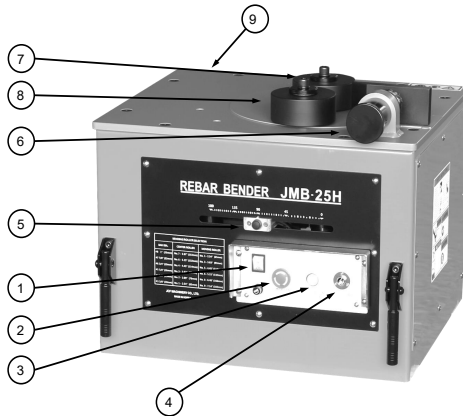
# 1. Basic Specifications and Performance

## 1-1 Specifications

Classification	JMB-25H
Power Supply	Single Phase 115V / 60HZ
Current	12 Amp
Motor	2.2 kW
Bending Capacity	25mm ( #8)
Bending Angle	1~180°
Bending Time	180° / 7sec.
Weight	132kg

## 1-2 Feature Identification

1. Power Switch
2. Emergency Switch
3. Operation Switch
4. Footing Switch
5. Angle Adjustment Handle
6. Bar Adjustment Stopper
7. Center Roller
8. Moving Roller
9. Spring Tension Bolt



## 1-3. Simultaneous Bending Capacity and Number of Bars (refer to the front panel of the machine)

Bar Thickness Model	D-10 ( #3 )	D-13 ( #4 )	D-16 ( #5 )	D-19 ( #6 )	D-22 ( #7 )	D-25 ( #8 )
JMB-25H	4	3	2	2	1	1

## 2. Installation and Work Preparation

### 2-1 Installation

- (1) Install the machine on a level, even surface.
- (2) If the ground is not level, use an auxiliary base capable of supporting the bender rigidly.

### 2-2 Power Connection

- (1) Power cable conductor must be at least 5.5mm<sup>2</sup>.
- (2) Power cable length must not exceed 50m.  
<If it exceeds 50m, use a cable of 8mm<sup>2</sup> minimum.>

### 2-3 Work Preparation

- (1) Turn on the power switch. Set the Angle Adjustment at about 135°, and let the machine run idly for at least 3 minutes.  
(Warming up should be at least 5 minutes in winter.)
- (2) Once warmed up, set the desired angle for bending.
- (3) Select the roller according to the thickness of the steel bar.

BENDING ROLLER SELECTION		
BAR DIA.	CENTER ROLLER	MOVING ROLLER
#8 1" (25mm)	No. 7 - 5.97" (153mm)	No. 1 - 2.54" (65mm)
#7 7/8" (22mm)	No. 6 - 5.15" (132mm)	No. 3 - 3.63" (93mm)
#6 3/4" (19mm)	No. 4 - 4.45" (114mm)	No. 5 - 4.45" (114mm)
#5 5/8" (16mm)	No. 3 - 3.63" (93mm)	No. 6 - 5.15" (132mm)
#4 1/2" (13mm)	No. 2 - 3.09" (79mm)	No. 8 - 6.48" (166mm)
#3 3/8" (10mm)	No. 1 - 2.54" (65mm)	No. 9 - 7.14" (183mm)

### 3. Periodic Check and Maintenance

Trouble	Inspection and Maintenance
Excessive noise	<ul style="list-style-type: none"> <li>① Check the precision of the reducing gear.</li> <li>① Check for wear or damage of the gears in the gear box.</li> </ul>
Bar angle cannot be adjusted	<ul style="list-style-type: none"> <li>① Remove foreign matter from the Angle Adjustment Slide.</li> <li>① Check switch for ease of operation. Repair or replace as appropriate.</li> </ul>
Does not rotate	<ul style="list-style-type: none"> <li>① Check Foot Switch connection.</li> <li>① Check if Emergency Switch is pressed.</li> <li>① Check gear connection. Take measures as necessary.</li> <li>① If motor output power is reduced, replace carbon brush of motor.</li> </ul>
Electric devices and wiring connection	<ul style="list-style-type: none"> <li>① Check connections from time to time. Fix wiring when necessary.</li> <li>① Check switch operation. Remove foreign matter if necessary.</li> <li>① Check wiring connections. Correct broken or damaged lines.</li> </ul>
Clean-up	<ul style="list-style-type: none"> <li>① Clean the machine of dust and bar chips with a brush (do not use compressed air).</li> <li>① Check for cracks or damage in mechanical parts. Replace or request after-service as necessary</li> <li>① After the rainy season or after rain, pull off cover and dry machine completely.</li> <li>① When soaked in water or exposed to rain, there is a danger of electric shock. Do not try to use the machine. Call for service.</li> </ul>

## 4. Precautions

- (1) Do not exceed the machine's capacity for simultaneous bending. If exceeded, machine failure may result.
- (2) When bending re-bars while holding them, watch out for your fingers and prevent accidents.
- (3) Depending on the re-bar material, it may fracture during bending, resulting in accident. Keep your attention fully focused on the bending work.
- (4) Ensure that no persons or objects are within the radius of the bending re-bar .
- (5) Since this machine uses electric power, rain or water may cause an electricity leak. Keep in a dry place or cover with a waterproof film.
- (6) When moving the machine, check that the transportation handle is firmly fixed.

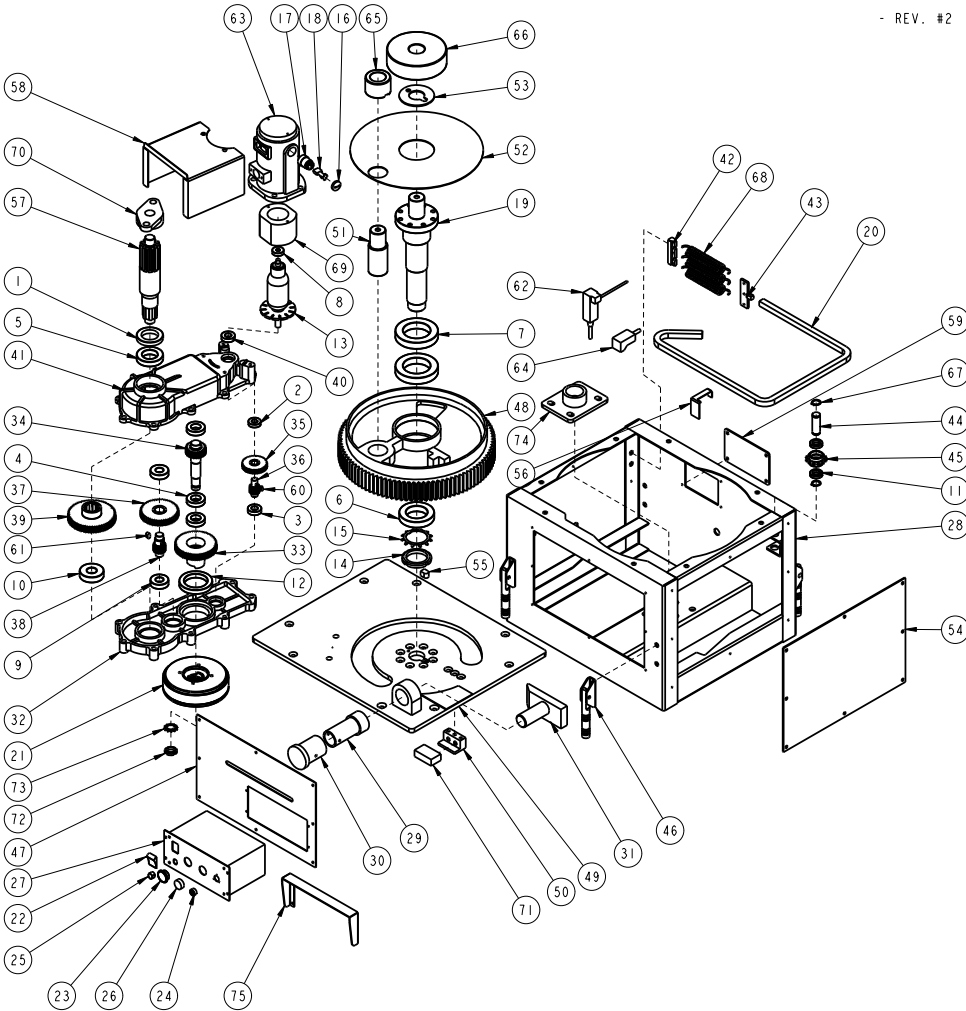
## 5. Repairs and Security

- (1) Replacing the carbon brush - Be sure to isolate the power plug from the power source. Check the carbon brush for wear when the machine is not in operation. If the carbon brush in the motor, which is subject to wear and tear, is worn, the motor will lose power or even stop until the power is next turned on. In such cases, the carbon brush(es) must be replaced.
- (2) On the motor inside the machine, unscrew the brush cap with a straight tip screwdriver, and remove the brush together with the spring (replace both of the brushes.)
- (3) When replacing the rotating roller or fixed roller, clean up with a brush.
- (4) Inspection and Security
  - Check that bolts and nuts are fully tightened from time to time.
  - Dry the machine sufficiently after the rainy season or rainfall, before operation.

- If the rotating roller jolts when returning to its original position, adjust it by unscrewing the spring tension adjustment bolt. If it returns too slowly, tighten the adjustment bolt.
- (5) When the power indicator lamp lights up after power input and power switch on, the machine is ready for operation. If the lamp is not lit, check the power cable connection. If the machine does not start up when the power lamp is lit, check the fuse or check the carbon brush in the motor for wear.
- (6) In the event of other troubles, please contact your nearest AVS Center.

### 6. Exploded View of the JMB-25H

- REV. #2





## JMB-25H BENDER PART LIST

REF NO	DESCRIPTION	Q'TY	REF NO	DESCRIPTION	Q'TY
1	Oil seal	1	38	4th gear (34phi gear)	1
2	6002ZZ bearing	1	39	3rd gear (123 phi gear)	1
3	6003ZZ bearing	2	40	6003ZZ bearing	1
4	6005ZZ bearing	3	41	Gear box top housing	1
5	6008ZZ bearing	1	42	Spring bracket	1
6	6011DD bearing	1	43	Spring holder	1
7	6014ZZ bearing	2	44	Shaft for chain gear	3
8	6005ZZ bearing	1	45	Chain sprocket	3
9	6204ZZ bearing	2	46	Handle	4
10	6305ZZ bearing	1	47	Front pannel	1
11	6804ZZ bearing	6	48	Large gear (1st gear)	1
12	6912ZZ bearing	1	49	Top plate	1
13	Amature	1	50	Urethan holder	1
14	AN11 lock nut	1	51	Moving roller shaft	1
15	AW11 washer	1	52	Top dust cover	1
16	Carbon cap	2	53	Top center plate	1
17	Carbon Holder	2	54	Side cover	1
18	Barbon brush	2	55	Roller stoper	1
19	Center shaft Assy	1	56	Sensor detector	1
20	Chain	1	57	2nd gear (center shaft gear)	1
21	Clutch Assy	1	58	Dust cover for gear box	1
22	On/Off Switch	1	59	Rear cover	1
23	Emergency Switch	1	60	KEY 6*15*2R	1
24	Foot S/W connector	1	61	KEY 8*15*2R	1
25	Fuse	1	62	Limit switch	1
26	Start Button	1	63	Motor housing	1
27	Control box pannel	1	64	Angle sensor	1
28	Frame	1	65	ROLLER #1	1
29	Adjustable nut	1	66	ROLLER #7	1
30	Modulator handle	1	67	Snap ring	2
31	Bar stopper	1	68	Tension spring	3
32	Gear box bottom housing	1	69	Stator	1
33	7th gear (Clutch gear)	1	70	Flange unit UCFL205	1
34	6th gear (Clutch shaft gear)	1	71	Urethan	1
35	9th gear (69phi gear)	1	72	AN04 Lock nut	1
36	8th gear (28phi gear)	1	73	AW04 Lock washer	1
37	5th gear (98phi gear)	1	74	Center Shaft holder	1

# Important



## Portable Rebar Benders, Cutters & Other Products One-Year Warranty Program

-----000-----

**BN Products - USA, LLC.**

3450 Sabin Brown Road  
Wickenburg, Arizona 85390  
Phone: (800) 992-3833  
Phone: (928) 684-2813  
Fax: (928) 684-7041  
www.bnproducts.com



### Warranty Information

BN Products- USA warrants the tools it manufactures or distributes to the original purchaser, to be free of defects in materials and workmanship under normal and appropriate use and servicing for the period of one year from the date of purchase. BN Products - USA, sole responsibility under this warranty is limited to the replacement or repair, at a designated facility, of only the part or parts evaluated by Benner-Nawman upon inspection to be defective in materials and workmanship.

Any related part/parts determined by BN Products- USA to be defective will be either repaired or replaced free of charge. This warranty does not apply to any part/parts which have been subject to abuse or unauthorized repairs. All warranty claims must be accompanied by a legible copy of the original bill of sale which includes the model number and 6-digit serial number.

BN Products- USA liability hereunder shall be limited to repair or replacement of the defective part/parts and shall not, under any circumstances, include special, incidental or consequential damages whether or not known by or disclosed by Benner-Nawman, Inc. Such repair or replacement shall constitute a fulfillment of BN Products-USA's entire warranty hereunder.

This warranty does not extend to any costs or loss arising from or due to inconvenience, transportation damage, misuse, abuse, accident, theft, vandalism, or a similar incident. The foregoing warranty is exclusive and in lieu of all other warranties, including any the warranty of quality, expressed or implied, including any warranty of merchantability, or any warranty of fitness for any particular purpose.

| Warranty Card.indd |

PLEASE MAIL OR FAX THIS INFORMATION  
TO ACTIVATE YOUR WARRANTY

Date of purchase: \_\_\_\_\_

Tool Serial Number: \_\_\_\_\_ Model: \_\_\_\_\_

Sold To: \_\_\_\_\_

Address: \_\_\_\_\_

City, State & Postal Code: \_\_\_\_\_

Phone: \_\_\_\_\_ Fax: \_\_\_\_\_

Email: \_\_\_\_\_

Purchased From: \_\_\_\_\_

City & State: \_\_\_\_\_

**BN Products - USA, LLC.**  
3450 Sabin Brown Road  
Wickenburg, Arizona 85390

## Purchaser Warranty Claim Procedure

BN Products - USA will not be responsible for a replacement unit given to a customer without prior authorization, nor will any debits be honored.

BN Products - USA is first contacted. Let us know specifically what the problem is. Know the model number and 6-digit serial number.

You can try to resolve the repair over the phone by asking to ask to speak to a Product Specialist to determine the problem. It could be an easy repair like adding hydraulic oil, bleeding the tool, worn electrical brushes or cutting blocks, some metal wedged under the piston, blown fuse, etc...

If the tool needs to be sent in for warranty repair/evaluation, please contact our customer service department to obtain a Return Merchandise Authorization (RMA) and Shipping Instructions or have the distributor you purchased the tool from handle the return.

BN Products - USA has Authorized Warranty Repair Centers throughout the United States. There may be a facility closer that will reduce shipping time and cost. Repairs by an unauthorized warranty repair center will not be honored.

Customers are responsible for any shipping costs to the authorized warranty service center. If the tool is warranted by BN Products - USA, the company will pay the standard freight back to the shipper or customer anywhere in the Continental USA only.

BN Products - USA tool warranty claims must include a legible copy of the original bill of sale (the date the tool was purchased) with the model number and the 6-digit serial number.

Such repair or replacement shall constitute a fulfillment of BN Products-USA entire warranty hereunder. Defective product will be replaced or reimbursed 100% upon inspection. Any freight damage incurred in route will be covered as long as the damage was indicated on original Bill of Lading at time of receipt.





## **JMB-25H USER MANUAL**

PRODUCT : BN Products-USA™

MODEL : JMB-25H (#8 REBAR BENDER)

ADDRESS : 3450 Sabin Brown Raod  
Wickenburg, AZ 85390  
USA

TEL : (800 ) 992 -3833

[www.bnproducts.com](http://www.bnproducts.com)

BN Products-USA™ LLC.