



BN Products - USA, LLC.

A Division of Benner-Nawman, Inc. - Wickenburg, AZ

DBD-25X

#7 Rebar Bender Parts Guide

The DBD-25X heavy-duty portable rebar bender helps save valuable man-hours by bending rebar up to #7 (7/8") grade 60 at the job site or in your shop. This strong electric-mechanical bender has two pre-set angle locks for repeating the same angle bend. The lever-type angle selector can be set to accurately bend any angle from 0-180 degrees.

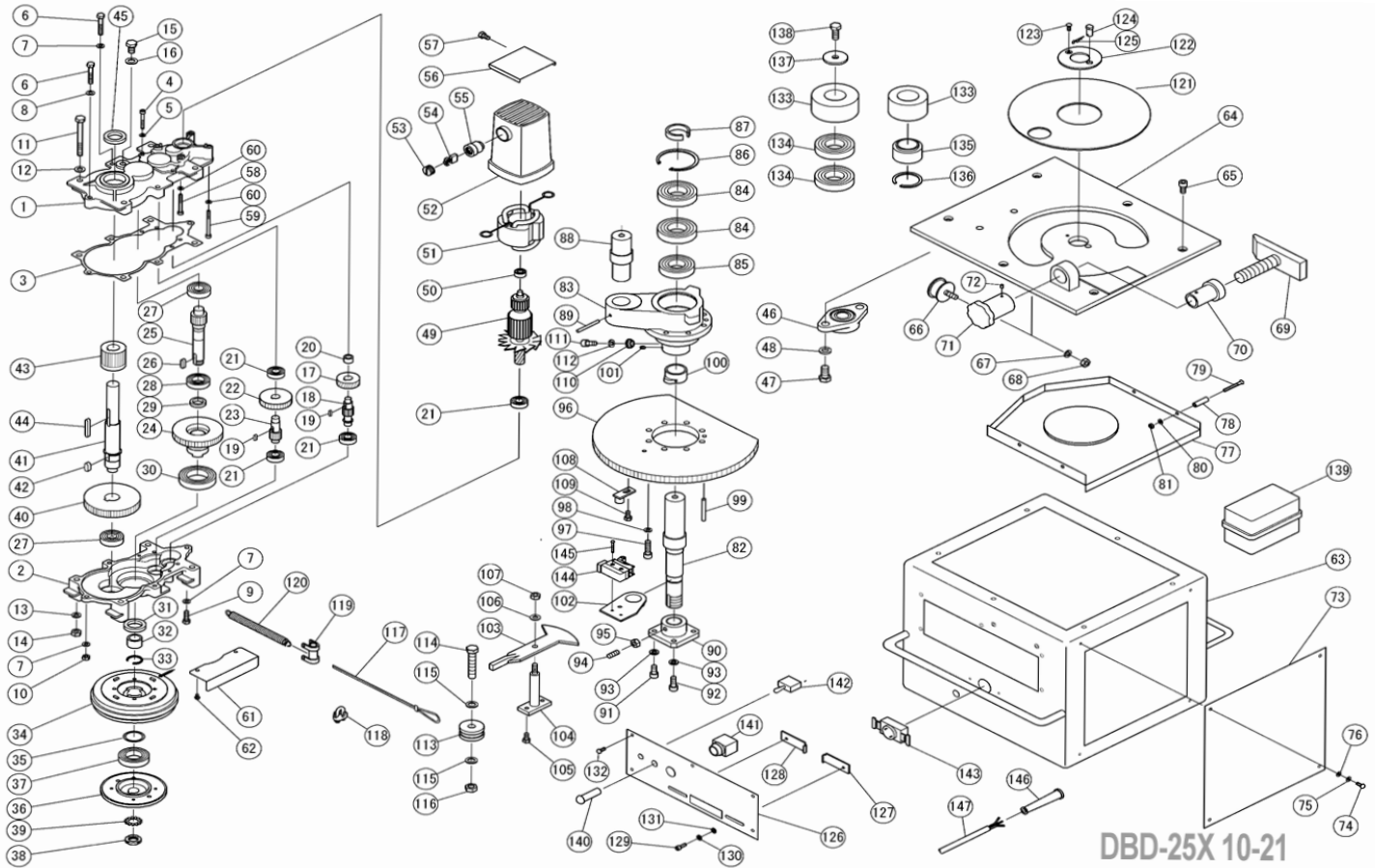


BN PRODUCTS-USA, LLC.
3450 SABIN BROWN ROAD | WICKENBURG, AZ
(800) 992-3833 | WWW.BNPRODUCTS.COM

REV | October 27, 2021
DBD-25X Bender Parts Manual 10-21P.indd

DBD-25X Exploded View

BN Products-USA™ Customer Service
(800) 992-3833



No.	Old Part No.	New Part No.	Part Name	Qty
1	1BR5001	1BR5001	GEAR CASE M	1
2	1BR5002	1BR5002	GEAR CASE C	1
3	1BR5206	1BR5203	GEAR CASE PACKING	1
4	7CB06045	7CB06045	CAP BOLT M6X45	2
5	7SW006	7SW006	SPRING WASHER M6	2
6	7B08050	7B08050	BOLT M8X50	3
7	7SW008	7SW008	SPRING WASHER M8	4
8	7PW008	7PW008	PLATE WASHER M8	1
9	7B08025	7B08025	BOLT M8X25	1
10	7N008	7N008	NUT M8	1
11	7B10100	7B10100	BOLT M10X100	4
12	7PW010	7PW010	PLATE WASHER M10	4
13	7SW010	7SW010	SPRING WASHER M10	4
14	7N010	7N010	NUT M10	4
15	7B12020	7B12015	BOLT M12X20	1
16	7WF12	7WF12	SEAL WASHER WF12	1
17	1BR5023	1BR5023	HELICAL GEAR	1
18	1BR5025	1BR5025	PINION NO.1	1
19	1BR5024	7K0505015R2	HELICAL GEAR KEY	2
20	1BR5009	7TA1212	NEEDLE BEARING TA1212	1
21	1BR5003	76202V	BEARING 6202V, 6202ZZ	4
22	1BR5026	1BR5026	GEAR NO.1	1

No.	Old Part No.	New Part No.	Part Name	Qty
23	1BR5027	1BR5027	PINION NO.2	1
24	1BR5028	1BR5028	GEAR NO.2	1
25	1BR5029	1BR5029	PINION NO.3	1
26	1BR5030	7K0707020R2	PINION KEY 7X7X20	1
27	1BR5004	76204	BALL BEARING 6204	2
28	1BR5006	76005	BALL BEARING 6005	1
29	1BR5015	1BR5015	OIL SEAL SC22-32-7	1
30	1BR5008	76009Z	BALL BEARING 6009Z	1
31	1BR5016	7SC45629	OIL SEAL SC45-62-9	1
32	1BR5010	7TA223020	NEEDLE BEARING TA223020	1
33	1BR5011	1BR5011	CIRCLIP AR-30	1
34	1BR5038	7TMF1341	7TMF1342 CLUTCH ASS'Y	1
35	1BR5043	1BR5043	SHIM	1
36	1BR5038D	1BR5038D	CLUTCH ARMATURE FLANGE	1
37	1BR5007	76007ZZ	BEARING 6007ZZ	1
38	1BR5031	7AN04	BEARING NUT	1
39	1BR5032	7AW04X	BEARING WASHER	1
40	1BR5033	1BR5033	GEAR NO.3	1
41	1BR5035	1BR5035	SHAFT	1
42	1BR5034	7K1008022R2	GEAR NO.3 KEY	1
43	1BR5036	1BR5036	PINION NO.4	1

No.	Old Part No.	New Part No.	Part Name	Qty
44	1BR5037	7K0707050R2	PINION KEY	1
45	1BR5017	1BR5017	OIL SEAL SC30-45-8	1
46	1BR5047	7UCFL205	FLANGE UNIT UCFL205	1
47	7B14028	7B14028	BOLT M14X28	2
48	7SW014	7SW014	SPRING WASHER M14	2
49	1BR5012C	7HTK002558B	ARMATURE 115V	1
50	1BR6200ZZ	76200ZZ	BALL BEARING 6200ZZ	1
51	1BR5012B	7HTK004135B	STATOR COIL 115V	1
52	1BR5012D	7HTK986750B	MOTOR HOUSING	1
53	1BR5012H	7HTK940540B	BRUSH CAP	2
54	1BR5012A	7HTK999038B	CARBON BRUSH SET	1
55	1BR5012E	7HTK986691B	CARBON BRUSH HOLDER	2
56	1BR5048	1BR5048	MOTOR COVER	1
57	7B08015	7B308016	BOLT M8X15 WITH WASHER	1
58	7CB06050	7CB06050	CAP BOLT M6X50	2
59	7CB06070	7CB06070	CAP BOLT M6X70	2
60	7SW006	7SW006	SPRING WASHER M6	4
61	1BR5044	1BR5044	CLUTCH COVER	2
62	7PB06008	7P206008	PAN HEAD BOLT M6X8 W/WASH	4
63	1BR50501A	1BR50501	FRAME	1
64	1BR50511	1BR50511	BASE	1
65	7CB10020	7CB10020	CAP BOLT M10X20	6
66	1BR5133	1BR5133	DAMPER	1
67	7SW010	7SW010	SPRING WASHER M10	1
68	7N010	7N010	NUT M10	1
69	1BR5063	1BR5063	ADJUSTABLE STOPPER	1
70	1BR5064	1BR5064	ADJUSTABLE NUT	1
71	1BR5065	1BR5065	ADJUSTABLE HANDLE	1
72	1BR5066	7SP05008	SPRING PIN Φ5X8	2
73	1BR5055	1BR5056	SIDE COVER	2
74	7PB06008	7PB306012	PAN HEAD BOLT M6X8	8
75	7SW006		SPRING WASHER M6	8
76	7PW006		PLATE WASHER M6	8
77	1BR7120	1BR7120	DUST COVER	1
78	1BR7121	1BR7121	DUST COVER STAY	4
79	7SB06050	7SB06050	FLAT HEAD BOLT M6X50	4
80	7SW006	7SW006	SPRING WASHER M6	4
81	7N006	7N006	NUT M6	4
82	1BR5068	1BR5068	MAIN SHAFT	1
83	1BR5069	1BR5069	SWIVEL ARM	1
84	1BR5070	76208Z	BALL BEARING 6208Z	2
85	1BR5071	76207Z	BALL BEARING 6207Z	1
86	1BR5072	7SRH080	SNAP RING C-80	1
87	1BR5073	1BR5073	SPACER	1
88	1BR50741	1BR5074	ROLLER SHAFT	1

No.	Old Part No.	New Part No.	Part Name	Qty
89	1BR5075	7SP08060W	SPRING PIN Φ8X60	1
90	1BR50791	1BR5079	MAIN SHAFT CLAMP	1
91	7CB10020	7CB10020	CAP BOLT M10X20	2
92	7CB10025	7CB10025	CAP BOLT M10X25	2
93	7SW010	7SW010	SPRING WASHER M10	4
94	7SS10025	7SS10025	SET SCREW M10X25	1
95	7N010	7N010	NUT M10	1
96	1BR5084	1BR5084	SWIVEL GEAR	1
97	7CB10035	7CB10035	CAP BOLT M10X35	8
98	7SW010	7SW010	SPRING WASHER M10	8
99	7SP08030	7SP08030W	SPRING PIN Φ8x30	1
100	1BR5087	1BR5087	LIMIT SWITCH CAM	1
101	7SS06010	7SS06006	SET SCREW M6X10	1
102	1BR51324	1BR51324	ANGLE SET PINION	1
103	1BR5226	1BR52261	ANGLE SETTER	1
104	1BR50941	1BR50941	ANGLE STAND	1
105	7B308015	7B308016	BOLT M8X15 WITH WASHERS	2
106	1BR5098	7BW010	DISK SPRING M10	2
107	1BR5099	7HL010H1	LOCK NUT SET	1
108	1BR5101	1BR5101	SWITCH CAM	1
109	7B308015	7B308015	BOLT M8X15 WITH WASHERS	1
110	1BR5107	1BR5107	WIRE CLAMP	1
111	7CB10020	7CB10020	CAP BOLT M10X20	1
112	7SW010	7SW010	SPRING WASHER M10	1
113	1BR51101	1BR51101	JIB	1
114	7B14070	7B14070	BOLT M14X70	1
115	7PW014	7PW014	PLATE WASHER M14	2
116	7UN014	7NU014	SELF LOCK NUT M14	1
117	1BR5116	1BR5116	WIRE ROPE	1
118	1BR5117	1BR5117	WIRE CLIP WITH NUT	1
119	1BR5118	1BR5118	SPRING HANGER	1
120	1BR5119	1BR5119	RETURN SPRING	4
121	1BR5135	1BR5135	CENTER COVER	1
122	1BR5134	1BR5134	CENTER PLATE	1
123	7SB06015	7SB06015	FLAT HEAD BOLT M6X15	1
124	1BR507811	1BR50782	ROLLER STOPPER	1
125	1BRSS10	7SSP10	SNAP PIN	1
126	1BR5050	1BR50501B	SWITCH PANEL	1
127	1BR7070A	1BR7070	ANGLE STOPPER (R)	1
128	1BR7071	1BR7071	ANGLE STOPPER (L)	1
129	7CB06018	7CB06018	CAP BOLT M6X18	2
130	7DS006	7GW006	DISK SPRING M6	2
131	7PW006	7PW006	PLATE WASHER M6	2
132	7PB306015	7P306018	PAN HEAD BOLT W/ WASHERS	5
133	1BR5140	1BR5140	ROLLER NO.1 Φ50MM	1

No.	Old Part No.	New Part No.	Part Name	Qty
	1BR5142	1BR5142	ROLLER NO.2 Ø70MM	1
	1BR5143	1BR5143A	ROLLER NO.3 Ø79MM	1
	1BR51441	1BR5144A	ROLLER NO.4 Ø96MM	1
	1BR51451	1BR5155A	ROLLER NO.5 Ø120MM	1
	1BR5146	1BR5156A	ROLLER NO.6 Ø156MM	1
134	1BR5070	76208Z	BALL BEARING 6208Z	6
135	See 1BR5143		BEARING FOR ROLLER NO.3	1
136	ROLLER No. 3		SNAP RING BR60 FOR NO.3	1
137	1BR5076	1BL5402000	ROLLER CLAMP	2
138	1B12025	7B12025T11	1BR5080 CLAMP BOLT	2
139	1BR5129	1BR512911B	CONTROL BOX ASSEMBLY	1
	1BR5129A	1BR5406	MAGNETIC CONTACTOR	1
	1BR51291B1	1BR51295	DIODE	1
	1BR51291G	1BR51296	DIODE (U5G)	1
	1BR5129F	1BR5129F	FUSE HOLDER	1
	1BR5129G	1BR5129G	FUSE	1

No.	Old Part No.	New Part No.	Part Name	Qty
139	1BR5129H	1BR5129H	TRANSFORMER	1
	7Z21D101	7Z21D101	VARISTOR	1
	1BR51297	1BR51297	CONDENSER	1
	1BR5407	1BR5407	MAGNETIC CONTACTOR	2
	1BR5408	1BR5408	SOCKET FOR RELAY	2
140	1BR5126	1BR2211	PILOT LAMP	1
141	1BR5127	7AR22F0R10G	OPERATION SWITCH	1
	1BR5231	7AR22M-0R01R	EMERGENCY BUTTON 7ABS301NR	1
142	3CD0151	3CD0151	MAIN SWITCH	1
	3CD0111	3CD0111	RUBBER CAP	1
143	1BR5128	1BR5128	SOCKET FOR FOOT SWITCH	1
144	1BR5124	1BR5124	LIMIT SWITCH AZ7141	2
145	7PB204030	7P204030	PAN HEAD BOLT W/ WASHER	4
146	1BR5012G	7KR61	CORD ARMER	1
147	1BR5012F	1C1961F	CORD SET	1

