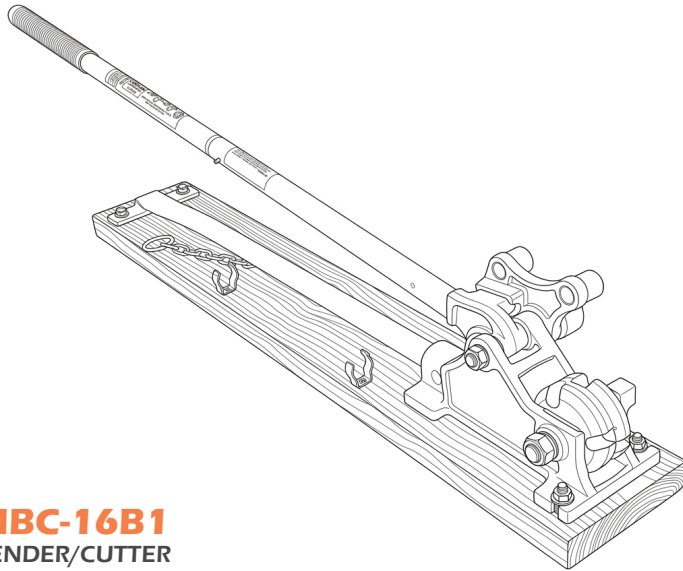


Manual Rebar Bender/Cutter

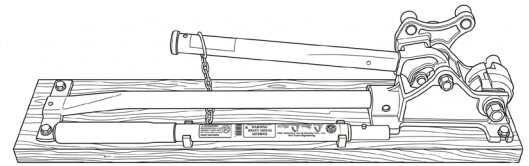
INSTRUCTION MANUAL

One Tool | Bend AND Cut Safely | Up to #5 (16 mm) Grade 60 Rebar



MBC-16B1
BENDER/CUTTER

In this Manual	
Specifications	1
About	1
Bending Rebar	2
Cutting Rebar	3
Parts Guide	4



Removable Handle and
Mounting Board Included

Manual Rebar Bender/Cutter Specifications

Model No.	MBC-16B1
Maximum Cutting Capacity	#5 (5/8") (16 mm) rebar grade 60
Maximum Bending Capacity	#5 (5/8") (16 mm) rebar grade 60
Bending Capability	0 - 90° (single bend); up to 180° (two steps)
Replacement Jaw Set	#MBC-16RJS - Weight: 7 lbs. (3.2 kg)
Shipping Weight	53 lbs. (24 kg) with wood board
Overall Dimensions	57" L x 7.5" W x 10" H (with handle)
Warranty	6 months (includes parts and labor)

About this Product

The MBC-16B1 bender/cutter is a manual tool that enables essential rebar bends and cuts for Grade 60 bar up to #5 (5/8" - 16 mm). This combination tool includes a handle and cam mechanism that provides accurate radius bends up to 90° in a single bend.

The MBC-16B1 features an adjustable 2-1/2" (63.5mm) diameter bending roller, and replaceable cutting jaws that incorporate two open slots, with hardened, optimally crafted blades to prevent chipping while cutting steel.

The sturdy frame design is firmly mounted on a 2" x 8" x 44" wood mounting board, and includes a lifting chain and ring for ease of transportation and storage.

MBC-16B1 Bending #3, #4, or #5 Grade 60 Rebar

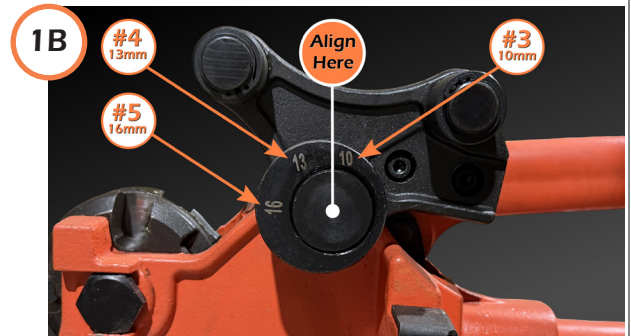
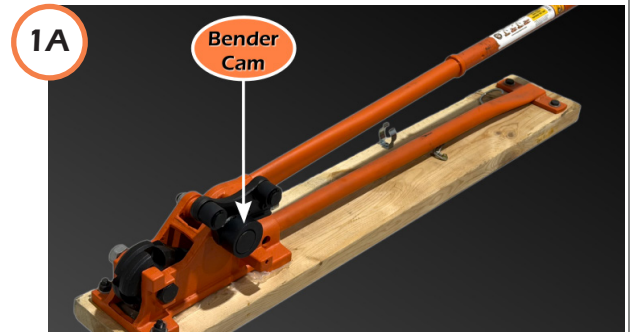
Step 1

Bender Cam (rebar diameter) Adjustment

The MBC-16B1 is designed for bending #3 (10mm), #4 (13mm), or #5 (16 mm) Grade 60 rebar. Make sure that the cam adjustment is set for the rebar diameter that you will be bending.

- Locate the Bender Cam for rebar size adjustment
- Pull the cam outward to rotate the adjustment to the diameter you will be bending (shown in mm) is in the top, or 12 o'clock position:

10	=	#3 (3/8" - 10 mm) rebar
13	=	#4 (1/2" - 13 mm) rebar
16	=	#5 (5/8" - 16 mm) rebar



Step 2

Bending Rebar (90° and 180° bends)

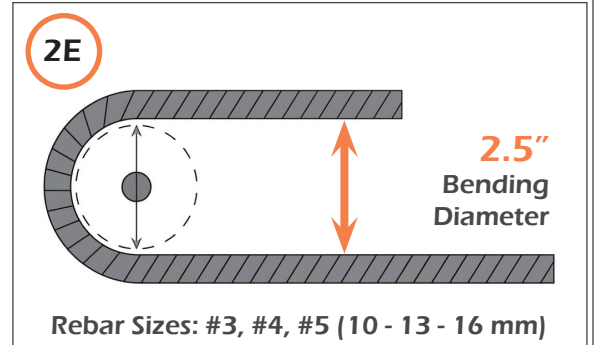
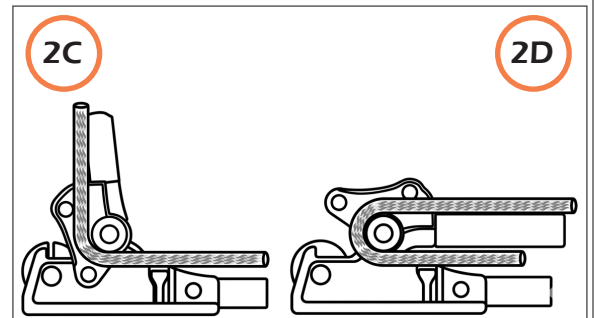
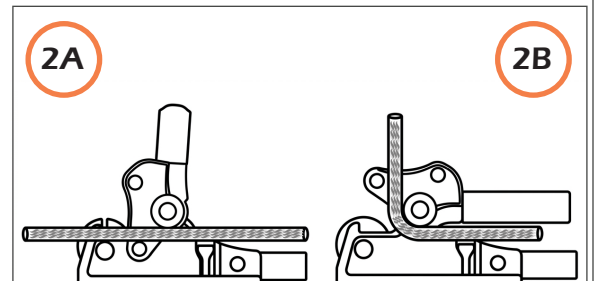
Once you've selected the proper Bending Cam diameter, raise the (assembled) tool handle into the upright or 180° position.

- Insert the rebar rod in the bending channel between the bending rollers, but below the Bender Cam, as shown.
- Apply pressure to the tool handle by pulling downward until the desired 90° bend is complete.

180° Bends

Making a 180-degree rebar bend requires two steps: bending the bar to 90 degrees, then repositioning the 90° bent rod in the bending tool, and pulling the handle to complete the 180° bend.

- Reposition the 90° bar between the bending rollers and the bender cam as shown in figure 2C.
- Apply pressure to the bender handle by pulling downward until the 180° bend is complete, with the longer lengths of the bar parallel to each other as shown in figure 2D.
- The bend diameter for a 180° bend using the MBC-16B1 manual bender/cutter is 2-1/2 inches, or 63.5 mm (see figure 2E for example).



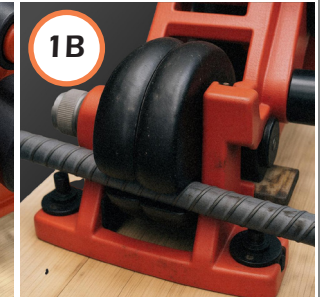
MBC-16B1 Cutting #3, #4, or #5 Grade 60 Rebar

Step 1

Select proper cutting slot for Rebar size

The MBC-16B1 features two separate cutting “slots” for larger and smaller rebar sizes. Both slots can accommodate a #4 (13 mm) rebar diameter.

- A. **Top Cutting Slot:** Larger Rebar - #5 (16 mm) and #4 (13 mm) - The top cutting slot is designed for these two sizes. Place the tool handle in the forward and upright position, and place the rebar in the top cutting slot. Ensure that the bar is seated fully into the cutting slot, with the opening in both blades aligned, as shown in figure 1A.
- A. **Lower Cutting Slot:** Smaller Rebar - #3 (10 mm) and #4 (13 mm) - The lower cutting slot is designed for these two sizes. Place the tool handle in the forward and upright position, and place the rebar in the lower cutting slot. Ensure that the bar is seated fully into the cutting slot, with the opening in both blades aligned, as shown in figure 1B.



Avoid Personal Injury

Work Safely

Bending and cutting with this tool requires coordination and moderate strength. Carefully position your feet to avoid falls or injury; use leverage from the large tool handle to aid in completing rebar bends and cuts.

Step 2

Cutting Motion

With the rebar length firmly placed in either the top or lower cutting slot, use a firm steady push to move the tool handle downward, in the position of the arrow, as shown in figure 2.

Be cautious of rebar pieces that could move when the cut is complete.

Cut Single Bars Only

This tool is not designed to cut more than a single bar at a time. Do **not** attempt to use both cutting slots simultaneously, as cutting would be extremely difficult, and may result in serious injury.



General Maintenance

Periodically lubricate all moving parts of the MBC-16B1 manual rebar bender/cutter. Keep the unit clean and free of debris and dust in moving parts to maintain safety and performance. Contact **Customer Service at (800) 992-3833** if parts are damaged or require replacement to ensure long lasting value and performance of this tool.

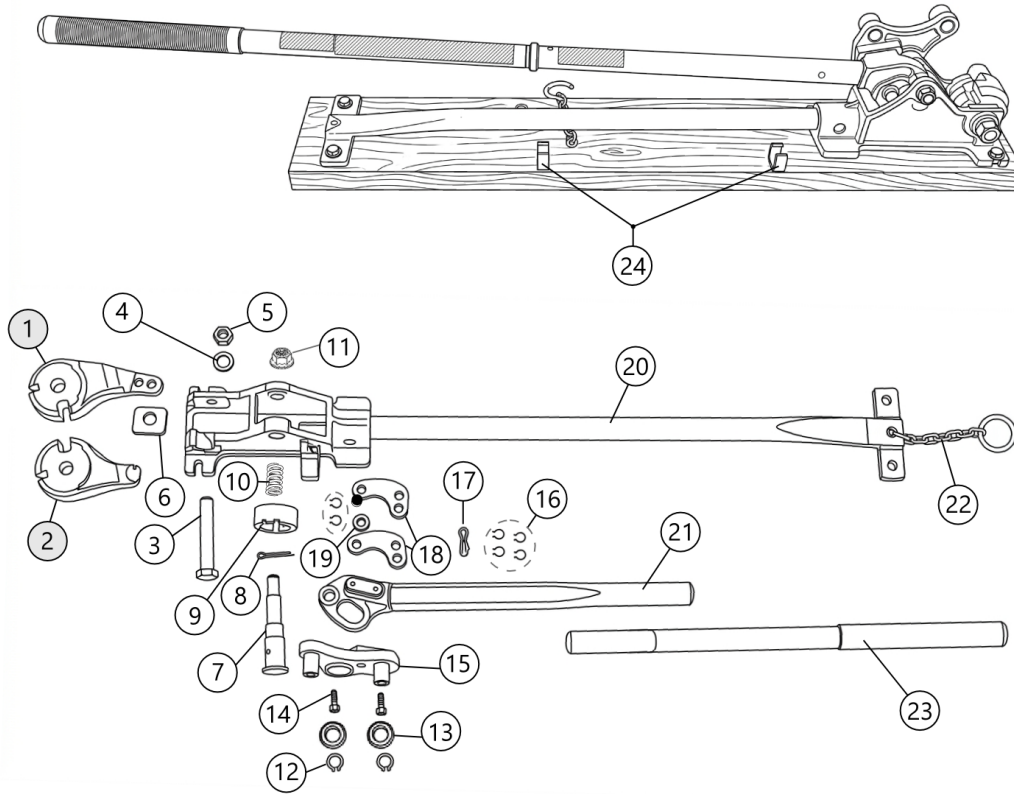


Use work gloves and safety glasses at all times when using the MBC-16B1 Manual Rebar Bender/Cutter



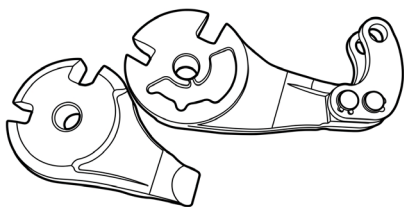
MBC-16B1 Parts Guide

Expanded View



Parts Listing

#	Part Number	Description	QTY	#	Part Number	Description	QTY
1	MBC16RJS	Movable Blade (R)	1 Pair (Replacement Blades)	13	MBC16-13	Large Bending Rollers	2
2		Movable Blade (L)		14	MBC16-15	Hex Head Bolt	2
3	MBC16-03	Blade Center Bolt	1	15	MBC16-16	Bender Bracket	1
4	MBC16-04	Center Bolt Washer	1	16	MBC16-17	Snap Ring - Inner Pin	6
5	MBC16-05	Center Bolt Lock Nut	1	17	MBC16-18	Inner Pin	3
6	MBC16-06	Spacer Plate	1	18	MBC16-19	Lever Plate	2
7	MBC16-07	Bender Shaft	1	19	MBC16-20	Inner Roller	1
8	MBC16-08	Roll Pin	1	20	MBC16-21	Main Frame	1
9	MBC16-09	Bender Cam	1	21	MBC16B1P-22	Handle (lower)	1
10	MBC16-10	Cam Spring	1	22	MBC16-23	Chain & Ring	1
11	MBC16-11	Bender Shaft Lock Nut	1	23	MBC16B1P-RH	Replacement Handle	1
12	MBC16-12	Snap Ring - Roller Shaft	2	24	MBC16-27	Handle Clips	2



**Replacement
Cutting Jaws**

**Part #
MBC16RJS**



BN Products-USA™

3450 N. Sabin Brown Road | Wickenburg, AZ 85390

(800) 992-3833 | www.BNProducts.com